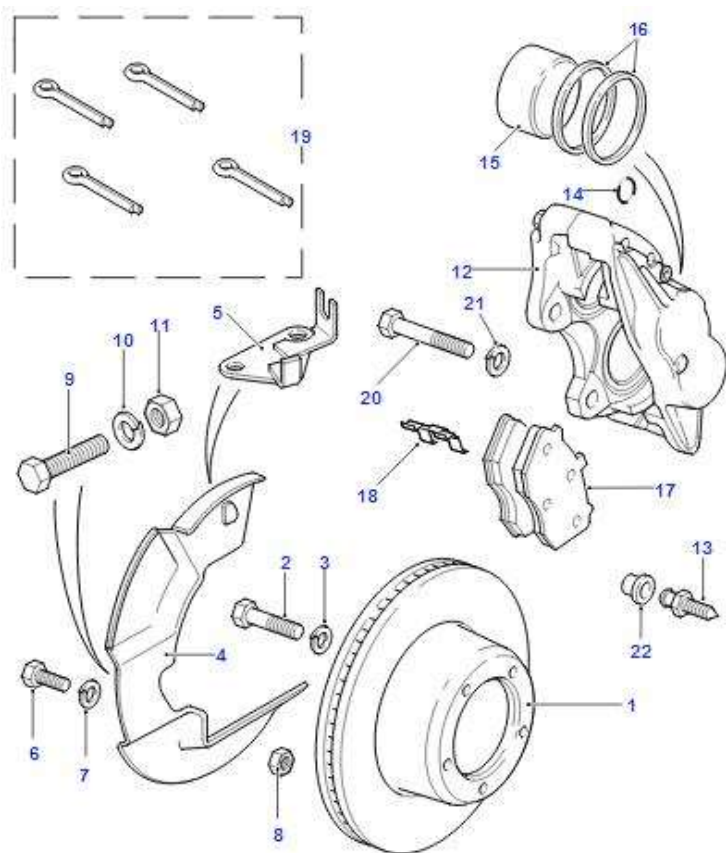


# PŘEDNÍ BRZDOVÉ KOTOUČE A BRZDIČE

## Front Brake Discs And Calipers For Land Rover Defender 1987 – 2006



### Poz.1 - Disc-brake

non-vented [FRC7329](#) -> [LR017951](#) kotouč neventilovaný Defender 90

center FROM VIN LA930456 [FTC902](#) -> [LR017952](#) kotouč ventilovaný Defender (1994 - 2016)

### Poz.2 – Bolt M10 , Hexagonal head 14mm

Šroub brzdového kotouče s přírubou M10x40mm/pev.12.9 (dřík 10mm), klíč bi-hex 14mm

[AFU1180](#) -> [FTC1368](#) -> [UYG500030](#) -> [LR082331](#)

### Poz.3 – Washer M10 TO VIN KA930455 - [WL110001L](#)

### Poz.4 - Shield-disc front brake, RH kryt brzdového kotouče, pravý

TO VIN KA930455 [FRC6402](#)

FROM VIN LA930456 - TO VIN TA989186 [FTC3278](#) -> [FTC4838](#)

FROM VIN TA989187 [FTC4838](#)

### Shield-disc front brake, LH kryt brzdového kotouče, levý

TO VIN KA930455 [FRC6403](#)

FROM VIN LA930456 - TO VIN TA989186 [FTC3279](#) -> [FTC4839](#)

FROM VIN TA989187 [FTC4839](#)

### Poz.5 - Bracket-brake pipe držák brzdové trubky

LH TO VIN WA159806 [FRC7201](#)

LH FROM VIN XA159807 - TO VIN 4A638617 [ANR5783](#)

LH FROM VIN 4A638618 [SHU000050](#)

RH TO VIN WA159806 [FRC7202](#)

RH FROM VIN XA159807 - TO VIN 4A638617 [ANR5784](#)

RH FROM VIN 4A638618 [SHU000040](#)

### Poz.6 – Screw, shield disc to disc solid,M6 X 12MM,Hexagonal Head [SH106121L](#)

Šroub slouží k upevnění krytu brz. disku ke spodnímu držáku na spodním čepu těhlice

### Poz.7 – Washer, M6,sprung TO VIN KA930455 [WL106001L](#) -> [WL106002](#)

**Poz.8 – Nut, M6,nyloc,Hexagonal samojistná matice M6 např. DIN985**

TO VIN KA930455 [NH106041L](#) -> [FY106046](#)

FROM VIN LA930456 [NH106045](#)

**Poz.9 – Screw, tahle položka je matoucí**

To shield disc,M6 X 12MM,Hexagonal Head TO VIN KA930455 [SH106121L](#)

To shield disc,Shouldered,Hexagonal Head,M12 x 50 FROM VIN LA930456 [SH112505](#)

*Pozn. Pro vozy od LA930456 se pro upevnění krytu disku používá i uchycení na dorazovém šroubu zatažení, tzv. Bolt steering lock stop. Při nastavování dorazu zjištěno, že by bylo záhodno použít delší typ M12x60.*

**Poz.10 – Washer M6,sprung TO VIN KA930455 [WL106002](#) podložka pérová např. DIN7980**

**Poz.11 - Nut-hexagonal-thin M12 [NT112041L](#) matice nízká**

**Poz.12 - Caliper assembly-front brake – Brzdový třmen (brzdíč)**

- Less Pads,LH,exchange

Disc Brakes Front,With Front Vented Brake Discs

FROM VIN 6A713928 [LR005949](#) -> [SEB500470](#)

- Less Pads,RH,exchange

Disc Brakes Front,With Front Vented Brake Discs

FROM VIN LA930456 - TO VIN 6A713927 [LR005951](#) -> LR008230 -> [SEB500460](#)

- Less Pads,LH,Exchange Part (Re-Manufactured)

90"" Wheelbase,LHD

TO VIN HA701009 - (A)FROM 23L05988 - (A)TO 23L06059 [LR017738](#)

TO VIN HA701009 - (A)FROM 23L06079 - (A)FROM 23L06079 [LR017738](#)

90"" Wheelbase,RHD

TO VIN HA701009 - (A)FROM 22L10272 - (A)FROM 22L10272 [LR017738](#)

TO VIN HA701009 - (A)FROM 22L09655 - (A)TO 22L10191 [LR017738](#)

110"" Wheelbase

TO VIN KA930455 [LR017752](#) -> [RTC5573](#)

90"" Wheelbase

FROM VIN HA701010 - TO VIN KA930455 [LR017752](#) -> [RTC5573](#)

- Less Pads,RH,Exchange Part (Re-Manufactured)

90"" Wheelbase LHD

TO VIN HA701009 - (A)FROM 23L05988 - (A)TO 23L06059 [LR017742](#)

TO VIN HA701009 - (A)FROM 23L06079 - (A)FROM 23L06079 [LR017742](#)

90"" Wheelbase,RHD

TO VIN HA701009 - (A)FROM 22L09655 - (A)TO 22L10191 [LR017742](#)

TO VIN HA701009 - (A)FROM 22L10272 - (A)FROM 22L10272 [LR017742](#)

110"" Wheelbase

TO VIN KA930455 [LR017748](#) -> [RTC5572](#)

90"" Wheelbase

FROM VIN HA701010 - TO VIN KA930455 [LR017748](#) -> [RTC5572](#)

- Less Pads,RH

90"" Wheelbase,RHD

TO VIN HA701009 - (A)TO 22L09654 [RTC3380](#)

TO VIN HA701009 - (A)FROM 22L10192 - (A)TO 22L10271 [RTC3380](#)

TO VIN HA701009 - (A)FROM 22L10272 - (A)FROM 22L10272 [RTC4998](#)

TO VIN HA701009 - (A)FROM 22L09655 - (A)TO 22L10191 [RTC4998](#)

90"" Wheelbase,LHD

TO VIN HA701009 - (A)TO 23L05987 [RTC3380](#)

TO VIN HA701009 - (A)FROM 23L06060 - (A)TO 23L06078 [RTC3380](#)

TO VIN HA701009 - (A)FROM 23L06079 - (A)FROM 23L06079 [RTC4998](#)

TO VIN HA701009 - (A)FROM 23L05988 - (A)TO 23L06059 [RTC4998](#)

110"" Wheelbase

TO VIN KA930455 [RTC5572](#)

90"" Wheelbase

- FROM VIN HA701010 - TO VIN KA930455 [RTC5572](#)  
Disc Brakes Front, Less Ft And Rr Vented Brake Discs  
FROM VIN 6A713928 [SEB500440](#)  
FROM VIN LA930456 - TO VIN 6A713927 [STC1263](#) -> [SEB500440](#)  
Disc Brakes Front, With Front Vented Brake Discs  
FROM VIN 6A713928 [SEB500460](#)
- Less Pads, LH**  
90" Wheelbase, LHD  
TO VIN HA701009 - (A) TO 23L05987 [RTC3381](#)  
TO VIN HA701009 - (A) FROM 23L06060 - (A) TO 23L06078 [RTC3381](#)  
TO VIN HA701009 - (A) FROM 23L05988 - (A) TO 23L06059 [RTC4999](#)  
TO VIN HA701009 - (A) FROM 23L06079 - (A) FROM 23L06079 [RTC4999](#)  
90" Wheelbase, RHD  
TO VIN HA701009 - (A) TO 22L09654 [RTC3381](#)  
TO VIN HA701009 - (A) FROM 22L10192 - (A) TO 22L10271 [RTC3381](#)  
TO VIN HA701009 - (A) FROM 22L09655 - (A) TO 22L10191 [RTC4999](#)  
TO VIN HA701009 - (A) FROM 22L10272 - (A) FROM 22L10272 [RTC4999](#)  
110" Wheelbase  
TO VIN KA930455 [RTC5573](#)  
90" Wheelbase  
FROM VIN HA701010 - TO VIN KA930455 [RTC5573](#)  
Disc Brakes Front, Less Ft And Rr Vented Brake Discs  
FROM VIN 6A713928 [SEB500450](#)  
FROM VIN LA930456 - TO VIN 6A713927 [STC1262](#) -> [SEB500450](#)  
Disc Brakes Front, With Front Vented Brake Discs  
FROM VIN LA930456 - TO VIN 6A713927 [STC1267](#) -> [SEB500470](#)
- Less Pads, LH, New Part - Please Check For Remanufactured Version, New**  
Disc Brakes Front, With Front Vented Brake Discs  
FROM VIN 6A713928 [SEB500470](#)
- Less Pads, RH, New Part - Please Check For Remanufactured Version, New**  
Disc Brakes Front, With Front Vented Brake Discs  
FROM VIN LA930456 - TO VIN 6A713927 [STC1266](#) -> [SEB500460](#)

### ***Defender 300TDi, Td5, Puma***

***Přední brzdový třmen levý pro ventilovaný disk - SEB500470 (STC1267)***

***Přední brzdový třmen pravý pro ventilovaný disk - SEB500460 (STC1266)***

#### **Poz.13 - Screw-bleed brake – od vzdušňovací šroub brzdíče**

TO VIN KA930455 [RTC1526](#)

FROM VIN LA930456 [SMG000010](#)

#### **Poz.14 - Seal – těsnění brzdového třmenu**

90" Wheelbase

(A) FROM 23L06060 - (A) TO 23L06078 [17H8764L](#)

FROM VIN HA701010 - TO VIN KA930455 [17H8764L](#)

#### **Poz.15 - Piston front caliper – pístek předního brzdíče**

90" Wheelbase

TO VIN HA701009 [606683](#) = pístek (pr. 41 x h34) pro brzdíče s plným kotoučem

110, 130" Wheelbase, 90" Wheelbase

FROM VIN HA701010 - TO VIN KA930455 [STC201](#)

Contains 4 Pistons

FROM VIN LA930456 [STC1280](#) = sada 4ks pístků STC201 (pr. 46 x h31 mm) i s těsníci, protiprachovými a krycími kroužky

#### **Poz.16 - Kit-brake caliper piston seal – sada těsnění pístků brzdíče**

TO VIN HA701009 [AEU1547](#) – pro pístky 606683 – pr. 41x34mm

FROM VIN HA701010 [AEU2539](#) – pro pístky STC201 – pr. 46x31mm

**Poz.17 - Set-pad front brake system – sada brzdových destiček**

90"" Wheelbase,RHD

TO 22L09654 [RTC3163](#) -> [STC2956](#)

FROM 22L09655 - (A)TO 22L10191 [RTC5756](#) -> STC2951 -> STC3765

FROM 22L10192 - (A)TO 22L10271 [RTC3163](#) -> [STC2956](#)

TO VIN HA701009 - FROM 22L10272 -FROM 22L10272 [RTC5756](#) -> STC3765

90"" Wheelbase,LHD

TO 23L05987 [RTC3163](#) -> [STC2956](#)

FROM 23L05988 - TO 23L06059 [RTC5756](#) -> STC2951 -> STC3765

FROM 23L06060 - TO 23L06078 [RTC3163](#) -> [STC2956](#)

TO VIN HA701009 - FROM 23L06079 - FROM 23L06079 [RTC5756](#) -> STC3765

90"" Wheelbase

FROM VIN HA701010 - TO VIN KA930455 [RTC5574](#) -> STC2952

FROM VIN LA930456 [STC1275](#) -> [SFP000140](#) -> [SFP000260](#)

110"" Wheelbase

TO VIN KA930434 [RTC5574](#) -> STC2952

FROM VIN LA930435 - TO VIN 1A622423 [STC1275](#) -> [SFP000140](#) -> [SFP000260](#)

FROM VIN 2A622424 [SFP000140](#) -> [SFP000260](#)

**Poz.18 - Spring**

90"" Wheelbase

FROM 23L06060 - TO 23L06078 [606688](#)

**Poz.19 - Kit-brake pad retaining**

Front,Solid / Disc Brakes Front,Less Ft And Rr Vented Brake Discs [RTC5001](#)

Disc Brakes Front,With Front Vented Brake Discs [RTC6799](#) -> [STC8575](#)

**Poz.20 - Bolt - šroub upnutí brzdiče**

Caliper assy to set pad, MF12x1,25/L=40

TO VIN KA930455 [AFU1031](#)

Caliper assy to set pad, M12x35 - pev. 12.9, klíč bi-hex 13mm

FROM VIN LA930456 [FTC3375](#) -> [SYP500090](#)

**Poz.21 - Washer [WL112001L](#)**

**Poz.22 - Cap-protective – ochranná čepička odvzdušňovacího šroubu [594091](#)**

**Britpart**

**DA1166 - Opravná sada předního brzdiče (nerez) – 8x pístek pr.46x31 + sada těsnění**

*Defender 110 (1991 - 2016) od VIN HA701010, např pro brzdiče SEB500470 a SEB500460*

**DA1165 - Opravná sada předního brzdiče (nerez) - 8x pístek pr.41x34 + sada těsnění**

*Defender 90 (1987 - 1991) do VIN HA701009, Discovery 1 (1989 - 1999) plný disk*



Sada STC8575



sada RTC5001

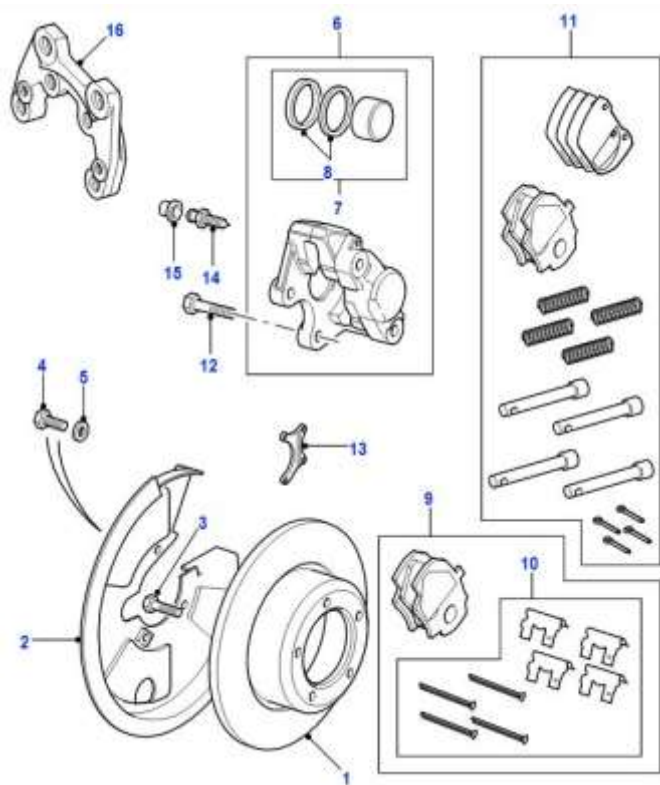


sada BR3149 (poz.18)

Bearmach

# ZADNÍ BRZDOVÉ KOTOUČE A BRZDIČE

Rear Brake Discs And Calipers (less Anti-lock Braking System) For Land Rover Defender 1987 – 2006



**Poz.1 - Disc-solid brake – brzdový kotouč**

90" Wheelbase - Defender 90 (1987 - 2016) - [FTC1381](#) -> [LR017953](#)

110, 130 Wheelbase

TO VIN WA159806 (1987 – 1998) [FTC3846](#)

FROM VIN XA159807 - TO VIN 1A614447 [SDB100980](#) -> [SDB000330](#) -> [LR018026](#)

FROM VIN 1A614448 [SDB000330](#) -> [LR018026](#)

**Poz.2 - Shield-disc rear brake – kryt brzdového kotouče**

RH - pravá strana [SMD100260](#) -> [SMD100261](#) -> [LR017960](#)

LH - levá strana [SMD100270](#) -> [SMD100271](#) -> [LR017961](#)

**Poz.3 - Bolt, M10 [FTC1368](#) -> [UYG500030](#) -> [LR082331](#)**

Šroub brzdového kotouče s přírubou M10x40mm/pev.12.9 (dřík 10mm), klíč bi-hex 14mm

**Poz.4 - Screw, M6x20MM, Flanged Head [FS106207L](#) -> [FS106206](#)**

**Poz.5 - Washer-Plain – podložka velkoplošná M6, potřeba 3ks [2215L](#)**

**Poz.6 - Caliper assembly-rear brake – brzdový třmen (brzdíč)**

LH,exchange, 90 FROM VIN 6A713928 [LR005950](#) -> [SMC500260](#)

RH,exchange, 90 TO VIN 6A713927 [LR005952](#) -> [SMC500110](#)

RH

90

FROM VIN 1A614448 [SMC00018](#) -> [SMC500270](#)

FROM VIN 6A713928 [SMC500270](#)

90" Wheelbase FROM VIN 6A713928 [SMC500110](#)

**110,130 TO VIN 1A614447 [STC1268](#)**

LH

90 FROM VIN 1A614448 - TO VIN 6A713927 [SMC000190](#) -> [SMC500260](#)

90" Wheelbase FROM VIN 6A713928 [SMC500240](#)

TO VIN 6A713927 [STC1265](#) -> [SMC500240](#)

**110,130 TO VIN 1A614447 [STC1269](#)**

LH,New Part Check For Reman Version,New, 90 FROM VIN 6A713928 [SMC500260](#)

RH,New Part Check For Reman Version,New, 90 TO VIN 6A713927 [STC1264](#) -> [SMC500110](#)

**Defender 110 (1994 - 2001) - 300TDi, Td5 do VIN 1A614447**

**Zadní brzdový třmen pravý - STC1268**

**Zadní brzdový třmen levý - STC1269**

**Poz.7 - Piston-rear caliper brake - Opravná sada zadního brzdíče**

**110,130** TO VIN 1A614447 [STC1281](#) – 2x pístek pr.46 + těsnění

*Defender 110/130 (1994 - 2001) do VIN 1A6144447*

FROM VIN 1A614448 [SEE000010](#) -> [SEE500130](#)

90"" Wheelbase [STC1279](#) -> [SEE500140](#)

**Poz.8 - Kit-brake caliper piston seal - Sada těsnění pístků pro jeden brzdíč**

90"" Wheelbase [8G8587L](#)

**110,130** TO VIN 1A614447 [STC1270](#) pro pístky pr.46

*Defender 110/130 (1994 - 2001) do VIN 1A6144447*

FROM VIN 1A614448 [SMN000060](#) pro pístky pr.46

*Defender 110/130 (2001 - 2016) od VIN 1A614448*

**Poz.9 - Set-pad rear brake system - Sada brzdových destiček – Defender 90**

90"" Wheelbase

TO VIN 1A614447 [STC1276](#) -> [SFP000150](#) -> [SFP000270](#) -> [LR032954](#)

FROM VIN 1A614448 - TO VIN 2A622423 [SFP000150](#) -> [SFP000270](#) -> [LR032954](#)

FROM VIN 2A622424 [SFP000270](#) -> [LR032954](#)

**Poz.10 - Kit-brake pad retaining - Zajišťovací sada zadních destiček**

90"" Wheelbase [STC8574](#)

**110, 130** *Defender (1994 - 2016) např. sada Britpart DA4105*

**Poz.11 - Set-pad rear brake system - Sada brzdových destiček – Defender 110/130**

TO VIN WA159806 [STC1601](#) -> [SFP000160](#) -> [SFP000280](#) 300TDi

FROM VIN XA159807 - TO VIN 1A614447 [SFP000160](#) -> [SFP000280](#) Td5 do 2001

FROM VIN 1A614448 - TO VIN 2A622423 [SFP000130](#) -> [SFP000250](#)

FROM VIN 2A622424 [SFP000250](#)

*Defender 110/130 (1994 - 2002) SFP000280 alter. BA2200 Brzdové destičky EBC ULTIMAX*

**Poz.12 - Bolt caliper, M12x35 - šroub brzdíče (jemný závit M12x1,25, klíč bi-hex 13)**

[FTC3375](#) -> [SYP500090](#)

**Poz.13 - Bracket-shield rear brake – držák plechového krytu brzdového disku**

90"" Wheelbase [FTC3299](#) -> [LR017513](#)

110"" Wheelbase

FROM VIN XA159807 - TO VIN 4A680606 [FTC4465](#)

FROM VIN 4A680607 [FTC4465](#)

**Poz.14 - Screw-bleed brake - odvzdušňovací šroub**

TO VIN 1A622423 [RTC1526](#)

FROM VIN 2A622424 [SMG000010](#)

**Poz.15 - Cap-protective – ochranná čepička odvzdušňovacího šroubu** [594091](#)

**Poz.16 - Bracket Mounting – montážní držák brzdového třmenu**

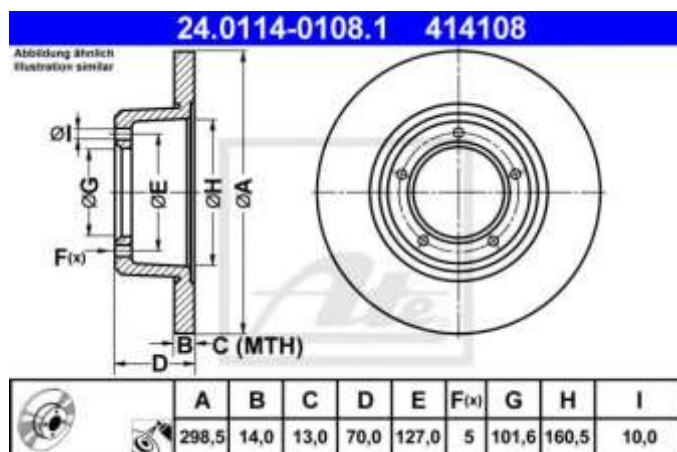
Axle Code 38S, Axle Code 39S

90,110,Rear Axle,Rear Axle Heavy Duty [FTC3306](#)

**Britpart**

**DA1172 - Opravná sada zadních brzdíčů (nerez, pro oba brzdíče) – 4x pístek pr.46x31 + sada těsnění**

*Pro Defender 110 a 130 (1994-2016), např. pro brzdíče STC1268 a STC1269*

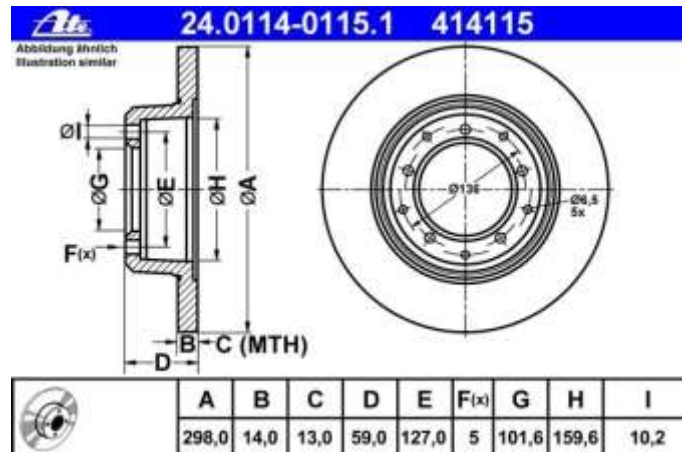


FTC3846

X



STC8574



LR018026

X

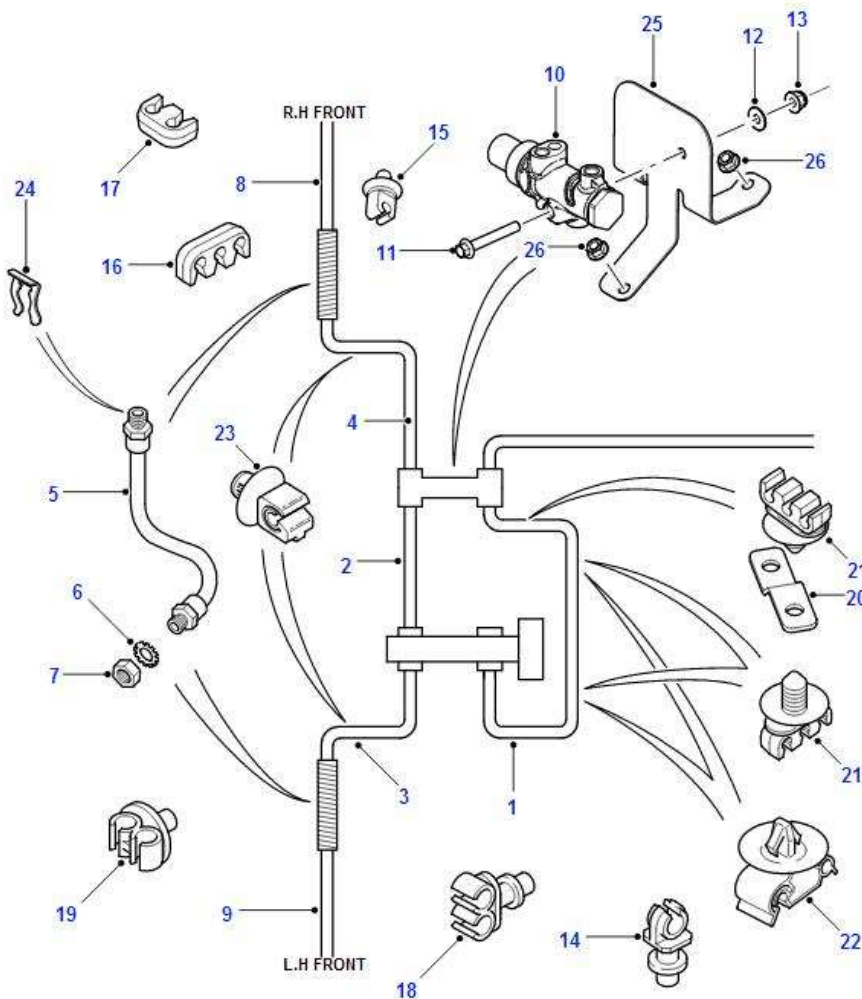


DA4105

# PŘEDNÍ ČÁST BRZDOVÉ SOUSTAVY

## S REGULAČNÍM VENTILEM (bez ABS) – trubky, hadice, příchytky

Front - Rear Discs With Brake Valve (less Anti-lock Braking System) For Land Rover Defender 1987 - 2006



**Poz.1 - Pipe assembly brake, master cylinder to valve rest, LHD,**

FROM VIN LA930456 - TO VIN MA948860 [NTC7962](#)-> [ANR3770](#)

FROM VIN MA948861 - TO VIN WA159806 [ANR3770](#)

FROM VIN XA159807 [SGB112440](#)

**Poz.2 - Pipe assembly brake, master cylinder to valve front, LHD,**

FROM VIN MA948861 - TO VIN WA159806 [ANR3069](#)

FROM VIN LA930456 - TO VIN MA948860 [NTC7970](#) -> [ANR3069](#)

FROM VIN XA159807 [SGB112450](#)

**Poz.3 - Pipe assembly brake, LH, master cylinder to jump hose**

**LHD FROM VIN LA930456 - TO VIN 4A638617 [NTC5708](#)**

*Brake Pipe Front Left Hand Master Cylinder To Caliper Hose Defender 90, Defender 110*

*Brzdová trubka mezi hl. brzdovým válcem a hadicí pro brzdič levého kola (u levostranného řízení!)*

RHD 2.5L I4 300 TDi Diesel Turbo FROM VIN LA930456 - TO VIN 4A638617 [NTC9726](#)

*All 4 cyl RHD models without ABS with rear disc brakes to (VIN) 4A638617*

LHD FROM VIN 4A638618 [SGB000921](#) -> [SGB501810](#)

**Poz.4 - Pipe assembly brake, RH, valve to front hose**

**FROM VIN LA930456 - TO VIN 4A638617 [ANR2503](#)**

*Defender 90, 110 All models without ABS with rear disc brakes (VIN) LA930456 to 4A638617*

*Brzdová trubka mezi pom. ventilem a hadicí pro brzdič pravého kola*

FROM VIN 4A638618 [SGB000891](#)

**Poz.5 - Hose brake**

FROM VIN LA930456 - TO VIN 4A683087 [NRC7874](#)

FROM VIN 4A683088 [SHB000110](#) -> [SHB500230](#)

**Poz.6 - Washer-Lock, 10mm** – *jistící podložka M10* - ID FROM VIN LA930456 [WF110001L](#)

**Poz.7 - Nut – Hex** - *matice M10x1, úzká š=5mm* - FROM VIN LA930456 [CRC1487](#)

**Poz.8 - Pipe assembly brake, RH** - *brzdová trubka k brzdovému třmenu*

**FROM VIN LA930456 - TO VIN WA159806** [ANR2946](#)

*Defender (1994 - 1998) od VIN LA930456 do VIN WA159805*

FROM VIN XA159807 - TO VIN 4A638617 [ANR5786](#)

FROM VIN 4A638618 [SGB000880](#) -> [SGB501800](#)

**Poz.9 - Pipe assembly brake, LH** - *brzdová trubka k brzdovému třmenu*

**FROM VIN LA930456 - TO VIN WA159806** [ANR2947](#)

*Defender (1994 - 1998) od VIN LA930456 do VIN WA159805*

FROM VIN XA159807 - TO VIN 4A638617 [ANR5785](#)

FROM VIN 4A638618 [SGB000870](#) -> [SGB501790](#)

**Poz.10 - Valve Brake** - *pomocný brzdový ventil – regulátor brzdné síly*

**FROM VIN MA939976** typ 29 PRF 43 - [ANR1415](#)

*Defender 110, 130 Vented Fr Disc/Solid Rear Disc, With 4 Wheel Disc-Brake*

*Ventil pro vůz s diskovými brzdami vpředu i vzadu (vpředu ventilované) – s červeným páskem*

*Alternativa – Bosch 0 986 482 016*

FROM VIN LA930456 - TO VIN LA939975 - [NRC8215](#)

*Ventil pro Defender 90 s bubnovými brzdami vzadu*

FROM VIN LA930456 typ 40 PRF 24 - [NTC8836](#)

*Ventil pro Defender 90 (do r.2006), bez ABS – se žlutým páskem*

**Poz.11 – Bolt** FROM VIN LA930456

[BH106091L](#) M6x45

[FB108111L](#) Flanged Head, M8x55 – *pozdější verze*

**Poz.12 – Washer** FROM VIN LA930456

[WL106001L](#) -> [WL106002](#) podložka 6mm, pérová

[WA108051L](#) -> [WA108056](#) podložka 8mm

**Poz.13 - Nut – Hex, nyloc** FROM VIN LA930456

[NH106041L](#) -> [NY106047L](#) -> [FY106046](#) matice samojistná M6

[NY108041L](#) -> [NY108041](#) -> [FY108046](#) matice samojistná M8

**Poz.14 - Clip - Brake Pipe** FROM VIN LA930456 [CRC1250L](#)

**Poz.15 - Clip - Brake Pipe** FROM VIN LA930456 [NTC1176](#)

**Poz.16 - Clip-brake pipe treble, RHD**

FROM VIN LA930456 [ADU8846L](#) -> [SGK100990](#)

FROM VIN YA189809 [SGK100990](#)

**Poz.17 - Clip-brake pipe double** FROM VIN LA930456 [AAU7803](#) -> [SGK100990](#)

**Poz.18 - Clip-brake pipe double** LHD FROM VIN LA930456 [79127](#)

**Poz.19 - Clip-brake pipe double** LHD FROM VIN LA930456 [NTC1177](#)

**Poz.20 - Bracket-brake pipe tee connector** FROM VIN XA159807 [SGI100020](#)

**Poz.21 - Clip-brake pipe treble** RHD

FROM VIN XA159807 - TO VIN YA189807 [SGK100870](#)

FROM VIN YA189808 [SGK100980](#)

**Poz.22 - Clip-brake pipe double** RHD

FROM VIN XA159807 - TO VIN YA189807 [SGK100860](#) -> [SGK100870](#)

FROM VIN YA189807 [SGK100970](#)

**Poz.23 - Clip - Brake Pipe** FROM VIN XA159807 [NTC9543L](#)

**Poz.24 - Clip – Hose** FROM VIN 4A638618 [EJP7813](#)



ANR1415 – červený pásek



NTC8836 – žlutý pásek



NRC8215



NTC5708



ANR2503



CRC1250L



NTC1176



AAU7803



SGK100990



79127



NTC1177



NTC9543L



SGK100870

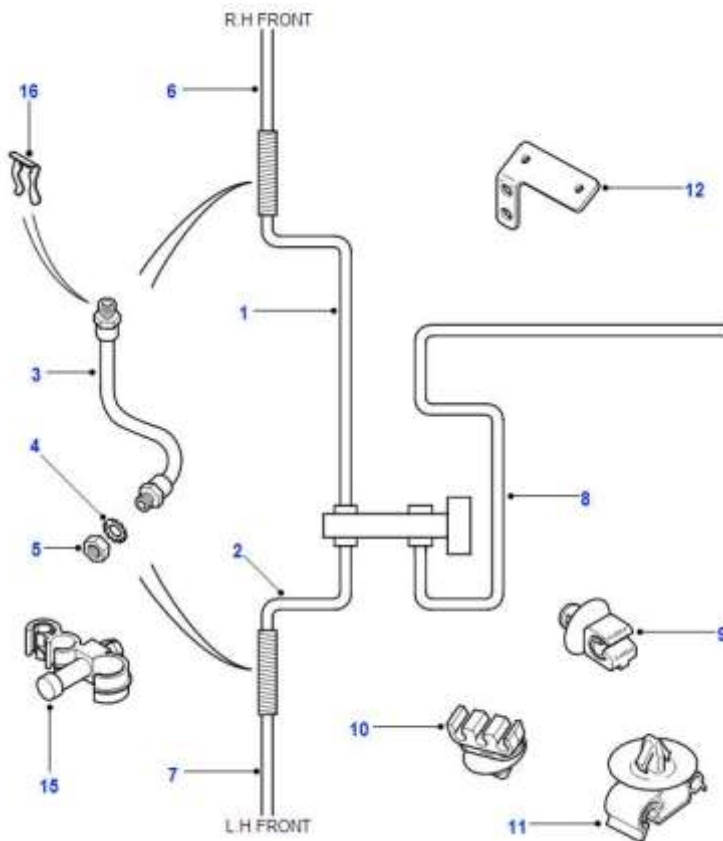


SGK100980

# PŘEDNÍ ČÁST BRZDOVÉ SOUSTAVY

## BEZ REGULAČNÍHO VENTILU (bez ABS) – trubky, hadice, příchytky

Front - Rear Discs Less Brake Valve (less Anti-lock Braking System) For Land Rover Defender 1987 – 2006



**Poz.1 - Pipe assembly brake, 4 Cylinder,**

master cylinder to jump hose, RH, LHD TO VIN 4A638617 [ANR2780](#)

**Poz.2 - Pipe assembly brake, LH, master cylinder to jump hose, LHD**

TO VIN 4A638617 [NTC5708](#)

FROM VIN 4A638618 [SGB000921](#) -> [SGB501810](#)

**Poz.3 - Hose brake**

TO VIN 4A683087 [NRC7874](#)

*Defender (1987 - 2004) do VIN 4A683087*

**Poz.6 - Pipe assembly brake, RH TO VIN 4A638617 [ANR5786](#)**

*Defender (1999 - 2004) od VIN XA159807 do VIN 4A638617*

*Defender 110 (1987 - 2004) bez ABS, bez brzdového ventilu, zadní kotoučové brzdy*

**Poz.7 - Pipe assembly brake, LH TO VIN 4A638617 [ANR5785](#)**

**Poz.8 - Pipe assembly brake**

master cylinder to connector

LHD TO VIN WA159806 [NTC8453](#)

RHD TO VIN WA159806 [NTC8454](#)

2.5L 5 Cyl L/R Turbo Diesel, Less Anti-Lock Braking System, LHD, Td5

FROM VIN XA159807 - TO VIN XA176106 [SGB112420](#)

FROM VIN XA176107 [SGB112421](#)

Less Anti-Lock Braking System, RHD

FROM VIN XA159807 - TO VIN XA176106 [SGB112460](#)

FROM VIN XA176107 [SGB112461](#)

2.5L 4 Cyl TDi L/R, Less Anti-Lock Braking System, LHD

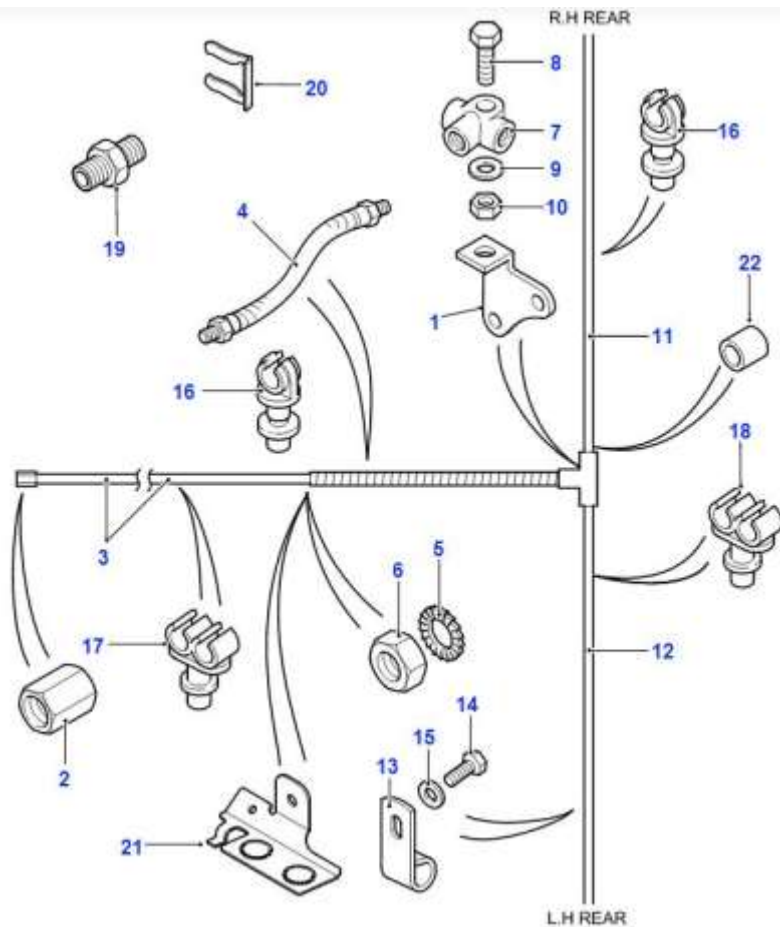
FROM VIN XA159807 - TO VIN XA176106 [SGB114450](#)

FROM VIN XA176107 [SGB112451](#)

# ZADNÍ ČÁST BRZDOVÉ SOUSTAVY

**brzdové kotouče, bez ABS – trubky, hadice, příchytky**

**Genuine Rear-non Abs-rear Discs For Land Rover Defender 1987 - 2006**



**Poz.1 - Bracket-brake pipe tee connector, T piece to axle** – držák T-dílu zadního brzdového rozvodu  
90, 110 "" Wheelbase, FROM VIN LA930456 [FTC4889](#)

**Poz.2 - Connector brake** FROM VIN LA930456 [BMK2466](#)

**Poz.3 - Pipe assembly brake, valve to rest** – trubka od předního regulačního ventilu k zadní hadici  
90"" Wheelbase FROM VIN LA930456 - TO VIN WA159806 [ANR2775](#)  
110,With Brake Apportioning FROM VIN LA930456 - TO VIN WA159806 [ANR2776](#)

Trubka mezi regulačním (PRV) ventilem a zadní hadicí před T-kusem

110 FROM VIN LA930456 - TO VIN WA159806 [ANR2777](#)

Trubka od předku k zadní hadici před T-kusem (vozy bez PRV ventilu)

130"" Wheelbase FROM VIN LA930456 - TO VIN WA159806 [ANR2778](#)

110,Less Brake Apportioning

FROM VIN XA159807 - TO VIN 1A608372 [SGB112350](#)

FROM VIN 1A608373 [SGB000650](#)

90"" Wheelbase,Less Anti-Lock Braking System FROM VIN XA159807 [SGB112020](#)

**Poz.4 - Hose brake**

90"" Wheelbase, FROM VIN LA930456 - TO VIN WA159806 [NRC9455](#)

110, FROM VIN LA930456 - TO VIN WA159806 [NRC9456](#)

Male Both Ends,Rear ,Less Anti-Lock Braking System FROM VIN XA159807 [SHB101370](#)

**Poz.5 - Washer-Lock 10mm** - zajišťovací podložka M10 FROM VIN LA930456 [WF110001L](#)

**Poz.6 - Nut – Hex** – matice M10x1 FROM VIN LA930456 [CRC1487](#)

**Poz.7 - T Piece Rear**

FROM VIN LA930456 [NRC4251](#) Defender (1983 - 1999) bez ABS

Less Anti-Lock Braking System FROM VIN XA159807 [SGL100000](#)

**Poz.8 - Bolt Hex M6x30**, T piece to pipe bracket FROM VIN LA930456 [BH106061L](#)

**Poz.9 - Washer M6** FROM VIN LA930456 [WA106041L](#) -> [WA106042](#)

**Poz.10 - Nut – Hex M6,nyloc** FROM VIN LA930456 [NH106041L](#) -> [FY106046](#)

**Poz.11 - Pipe assembly brake, RH,Rear - brzdová trubka, pravá strana**

90"" Wheelbase FROM VIN LA930456 - TO VIN WA159806 [NTC7676](#)

90, **110** FROM VIN LA930456 - TO VIN WA159806 [NTC7964](#)

*Brake Pipe Rear RH 110/130 from LA930456 to WA159806*

FROM VIN XA159807 - TO VIN 2A638133 [SGB112400](#)

90"" Wheelbase FROM VIN 2A638134 - TO VIN 5A699380 [SGB001830](#) -> [SGB501770](#)  
FROM VIN 5A699381 [SGB501770](#)

90"" Wheelbase FROM VIN XA159807 - TO VIN 2A639840 [SGB112380](#) -> [SGB501770](#)

**Poz.12 - Pipe assembly brake, LH,Rear – brzdová trubka, levá strana**

90, **110** FROM VIN LA930456 - TO VIN WA159806 [ANR2779](#)

*Brake Pipe Rear LH 90/110 from Vin LA Onwards*

FROM VIN XA159807 - TO VIN 2A638133 [SGB112410](#)

90"" Wheelbase FROM VIN LA930456 - TO VIN WA159806 [NTC7689](#)

*Brake Pipe Rear LH Range Rover Classic and 90/110 from HA*

FROM VIN XA159807 - TO VIN 2A639840 [SGB112390](#) -> [SGB501780](#)

110,90"" Wheelbase FROM VIN 2A638134, FROM VIN 2A639841 [SGB001860](#) -> [SGB501780](#)  
FROM VIN 4A673689 - TO VIN 5A699380 [SGB500500](#)-> [SGB501780](#)

FROM VIN 5A699381 [SGB500590](#) -> [SGB501780](#)

**Poz.13 - Clip-P upínka brzdové trubky k nápravě** FROM VIN LA930456 [577873](#)

**Poz.14 - Screw šroub (vrut) P-upínky** FROM VIN LA930456 [SL510031](#) -> [SL510032](#)

**Poz.15 - Washer-Plain** FROM VIN LA930456 [WC702101](#) -> [WC702101L](#)

**Poz.16 - Clip - Brake Pipe**

90"" Wheelbase FROM VIN LA930456 [79124](#) -> [CRC1250L](#)

90, **110** FROM VIN LA930456 [CRC1250L](#)

**Poz.17 - Clip-brake pipe double** FROM VIN LA930456 [79127](#)

**Poz.18 - Clip-brake pipe double** FROM VIN LA930456 [NTC8242](#)

**Poz.19 - Adaptor-pipe-dual male, 130 vsuvka M10x1** FROM VIN XA159807 [SGL100020](#)

**Poz.20 - Clip ,Less Anti-Lock Braking System** FROM VIN XA159807 [BNP2227L](#) -> [EJP7813](#)

**Poz.21 - Bracket-hose brake** FROM VIN XA159807 [SHU100340](#)

**Poz.22 - Spacer ,90"" Wheelbase** FROM VIN LA930456 [TYF101160](#)



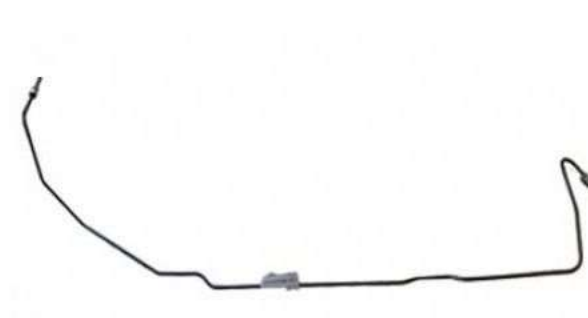
NTC7676



NTC7964 – 300TDi 110



ANR2779 - 300TDi 110



NTC7689



CRC1250L



79127



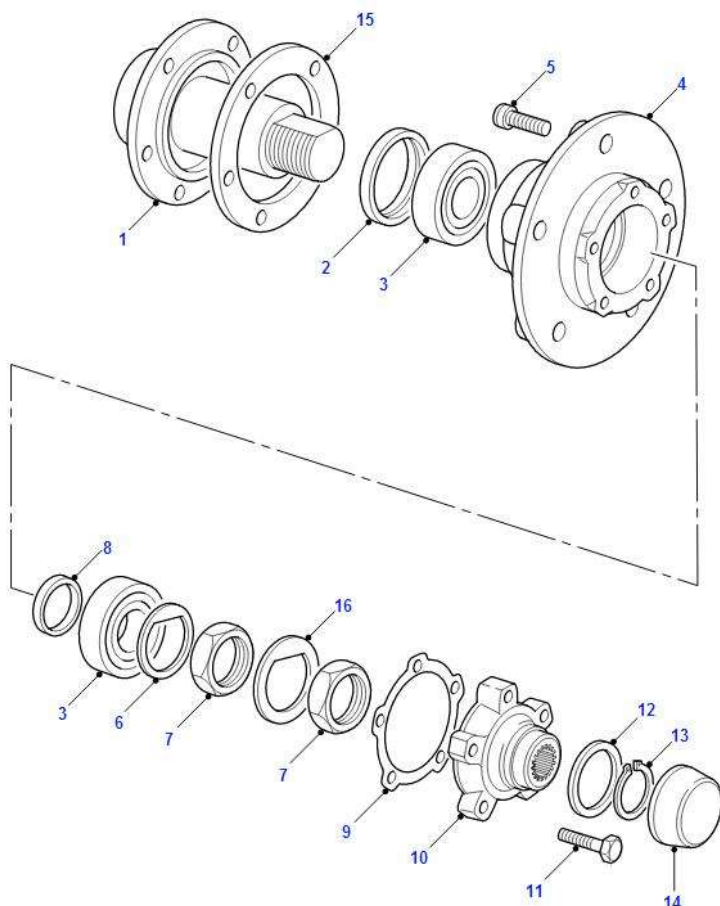
NTC8242



SGL100020

# NÁBOJ PŘEDNÍHO KOLA

Front Hubs-from (v) LA930456 For Land Rover Defender 1987 - 2006



**Poz.1 - Axle-stub-hub front suspension – nábojka předního kola**

FROM VIN LA930456 [FTC3154](#)

**Poz.2 - Seal inner – těsnění náboje na vnitřní straně**

FROM VIN LA930456 - TO VIN TA987746 [FTC2783](#) -> [FTC4785](#)

FROM VIN TA987747 [FTC4785](#) **Pozn.1**

**Poz.3 - Bearing** FROM VIN LA930456 – ložisko náboje [STC4382](#) **Pozn.1**

LM 603049/LM 603011 např. Timken SET 37

**Poz.4 – Hub - náboj**

Axle Code 61L,Axle Code 61S,Axle Code 63L,Axle Code 64L

TO VIN 4A999999 [FTC942](#) -> [FTC0942](#) -> [RUB500240](#)

FROM VIN 5A000001 - TO VIN 5A999999 [FTC0942](#) -> [RUB500240](#)

Axle Code 10M,Axle Code 11M,Axle Code 12M,Axle Code 13M,Axle Code 14M,Axle Code 15M,Axle Code 16M,Axle Code 17M

FROM VIN VA128340 - TO VIN WA159025 [RUB101740](#) -> [FTC0942](#) -> [RUB500240](#)

FROM VIN 6A000001 [RUB500240](#)

**Poz.5 – Stud - šroub kola**

TO VIN 2A631135 [FRC5926](#) -> [RUF000020](#) -> [RUF500010](#)

FROM VIN 2A631136 [RUF000020](#) -> [RUF500010](#)

**Poz.6 – Washer – vymezovací podložka náboje**

TO VIN TA996892 [FTC3185](#)

FROM VIN TA996893 [FTC5241](#)

**Poz.7 – Locknut – seřizovací i zajišťovací matice náboje**

Axle Code 61L,Axle Code 61S,Axle Code 63L,Axle Code 64L

FROM VIN LA930456 [FRC8700](#) **Pozn.1**

Axle Code 10M, 11M, 12M, 13M, 14M, 15M, 16M, 17M

**FROM VIN LA930456** [RFD100000](#) **Pozn.1, Pozn.2**

*Správně má asi být od VIN XA159807 Defender (1999 - 2015) [RFD100000](#)*

**Poz.8 – Spacer** – kroužek pro nastavení předpětí ložisek náboje – Defender Td5 a Puma

Purple, 15.5mm **FROM VIN LA930456** [TOF100000](#)

Yellow, 15.4mm **FROM VIN LA930456** [TOF100010](#)

Red, 15.3mm **FROM VIN LA930456** [TOF100020](#)

Blue, 15.2mm **FROM VIN LA930456** [TOF100030](#)

Green, 15.1mm **FROM VIN LA930456** [TOF100040](#)

Black, 15.0mm **FROM VIN LA930456** [TOF100050](#)

White, 14.9mm **FROM VIN LA930456** [TOF100060](#)

*Správně má asi být od VIN XA159807 Defender (1999 - 2015)*

**Poz.9 - Gasket-axle shaft drive member** – utěsnění unašeče poloosy

**FROM VIN LA930456** [571752](#) **Pozn.1**

**Poz.10 - Flange-driving shaft joint** – unašeč poloosy (24 drážek)

**FROM VIN LA930456** [FTC859](#) -> [RUC105200](#)

**Poz.11 - Bolt M10x45** – šroub unašeče poloosy (5ks)

**FROM VIN LA930456** [BX110095M](#) **Pozn.1**

**Poz.12 - Shim** – vymežovací podložka vůle poloosy

0.45MM **FROM VIN LA930456** [FRC6782](#)

0.60MM **FROM VIN LA930456** [FRC6783](#)

0.75MM

0.90MM

1.05MM

1.20MM

1.35MM

1.50MM

1.65MM **FROM VIN LA930456** [FRC6790](#)

**Poz.13 - Circlip**, axle shaft to hub driving member

**FROM VIN LA930456** [549473](#) **Pozn.1**

**Poz.14 - Cap-driveshaft coupling bolt locking**

with Land Rover logo **FROM VIN VA110616** [FTC5414](#)

Less Logo **FROM VIN LA930456 - TO VIN VA110615** [FTC943](#) -> [FTC5414](#) **Pozn.1**

**Poz.15 - Plate-front & rear stub axle locking** - krycí kroužek náboje

**FROM VIN LA930456** [FRC2310](#)

**Poz.16 - Washer-Lock, Outer** - zajišťovací podložka matic náboje – Defender 300TDi

**FROM VIN LA930456** [FTC3179](#) **Pozn.1**

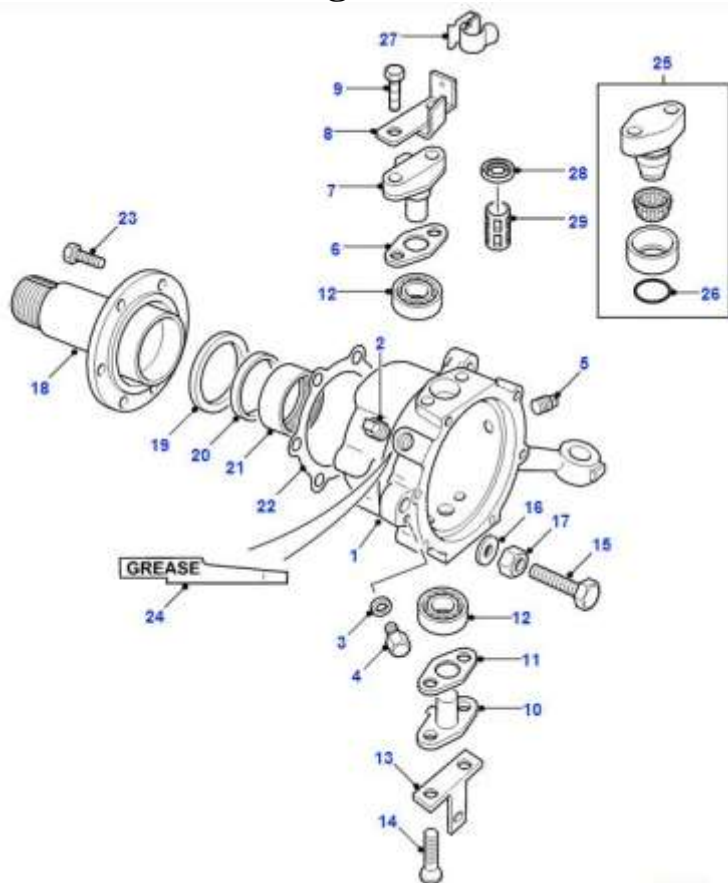
**Pozn.1** – tyto díly jsou obsaženy v sadě pro výměnu ložisek Britpart DA2381

*sada obsahuje i 30g maziva pro obě ložiska*

**Pozn.2** – Td5ka a Puma má v náboji jen jednu matici (zajišťovací) RFD100000 a pod ní podložku FTC5241

# SKŘÍŇ SVISLÝCH ČEPŮ (TĚHLICE)

Swivel Pin Housing-from (v) LA930456 For Land Rover Defender 1987 - 2006



**Poz.1 - Housing-swivel pin** – Těhlice ( skříň svislých čepů, skříň otoče nápravy,...)

RH – pravá strana

RHD FROM VIN LA930456 - TO VIN VA104814 [FTC3308](#)

RHD FROM VIN VA104815 [FTC5296](#) -> [FTC5298](#)

LHD FROM VIN LA930456 - TO VIN VA104814 [FTC3310](#)

LH – levá strana

RHD FROM VIN LA930456 - TO VIN VA104814 [FTC3309](#)

LHD FROM VIN LA930456 - TO VIN VA104814 [FTC3311](#)

LHD FROM VIN VA104815 [FTC5299](#) -> [FTC5297](#)

LH With Redundant Steering Arm

RHD FROM VIN VA104815 [FTC5297](#)

RH With Redundant Steering Arm

LHD FROM VIN VA104815 [FTC5298](#)

**Poz.2 - Plug-level** FROM VIN LA930456 [3292](#)

Kontrolní a nalévací zátka Defender (1987 - ....) Land Rover Series (1948 - 1984)

**Poz.4 - Plug-Drain** FROM VIN LA930456 [236070](#)

Pozn. - ve skutečnosti je to do LA -> vypouštěcí šroub pro Defender (1987 - 1994)

**Poz.5 – Plug, hex** FROM VIN LA930456 [FTC3670](#) Pozn. - u mě to není, viz poz.4

**Poz.6 – Shim** – vymezovací podložka

0.003“ FROM VIN LA930456 - TO VIN WA159806 [FRC2883](#) 0,075mm

0.005“ [FRC2884](#) 0,130mm

0.01“ [FRC2885](#) 0,250mm

0.03“ [FRC2886](#) 0,750mm

**Poz.7 – Pin** – horní čep otoče skříně

FROM VIN LA930456 - TO VIN WA159806 [FTC2882](#)

**Poz.8 - Bracket-brake pipe** – držák brzdové trubky

LH FROM VIN LA930456 - TO VIN WA159806 [FRC7201](#)

LH FROM VIN XA159807 - TO VIN 4A638617 [ANR5783](#)

LH FROM VIN 4A638618 [SHU000050](#)  
RH FROM VIN LA930456 - TO VIN WA159806 [FRC7202](#)  
RH FROM VIN XA159807 - TO VIN 4A638617 [ANR5784](#)  
RH FROM VIN 4A638618 [SHU000040](#)

**Poz.9 - Bolt, Hexagonal Head,M10 x 35**

FROM VIN LA930456 [BX110071M](#) -> [BX110076M](#)

**Poz.10 - Pin lower – spodní čep otoče nápravy**

FROM VIN LA930456 [FRC2894](#)

**Poz.11 - Gasket-lower swivel pin - těsnění spodního čepu**

FROM VIN LA930456 [FTC3647](#)

**Poz.12 - Bearing-taper roller, lower - kuželíkové ložisko čepů**

FROM VIN LA930456 [606666](#)

*Ložisko s dráhou 11590/11520 např. Timken SET 61*

**Poz.13 - Bracket – držák krytu brzdového kotouče**

FROM VIN LA930456 [FRC3725](#)

**Poz.14 - Bolt, M8,Hexagonal Head – šroub spodního čepu**

FROM VIN LA930456 [BH108061M](#) -> [FB108061](#) -> [1372612](#)

*Šroub M8x30 s přírubou pev. 8.8*

**Poz.15 - Bolt steering lock stop,M12**

M12x50 LE, FROM VIN LA930456 [FTC4111](#)

Shouldered,Hexagonal Head,M12 x 50 FROM VIN LA930456 [SH112505](#)

*Při nastavování dorazu zjištěno, že by bylo záhodno použít delší typ M12x60.*

**Poz.16 - Washer-Plain, M12x22 FROM VIN LA930456 [WB112081L](#)**

**Poz.17 - Nut-hexagonal-thin M12 – matice M12 úzká (ideálně nerez)**

FROM VIN LA930456 [NT112041L](#)

*Matice zajišťuje dorazový šroub a zároveň i krycí plech brzdového kotouče (FTC4838)*

**Poz.18 - Axle-stub-hub front suspension – nábojka předního kola**

FROM VIN LA930456 [FTC3154](#)

**Poz.19 - Washer-front hub thrust FROM VIN LA930456 [FTC56](#)**

**Poz.20 - Seal-stub axle – gufero nábojky kola**

FROM VIN LA930456 - TO VIN VA104814 - (A)FROM 20L77037C - (A)FROM 20L77037C

[FTC3145](#) -> [FTC5268](#)

Inner FROM VIN VA104815 [FTC5268](#)

Outer FROM VIN LA930456 - (A)TO 20L77036C [FTC840](#)

*Defender (1994 - 1997) náprava 20L77036C*

**Poz.21 - Bearing-front/rear axle hub, swivel pin housing – ložisko nábojky kola**

FROM VIN LA930456 [FTC861](#)

*Jehličkové ložisko D=47, d=40, h=16mm, např. od výroce IKO TLA4016Z nebo INA HK4016*

**Poz.22 - Gasket-stub axle, Asbestos Free – těsnění nábojky kola k těhlici**

FROM VIN LA930456 [FTC3648](#)

**Poz.23 – Screw, Hexagonal Head,M10x25, šroub nábojky kola, pevn. 10.9, potřeba 6ks**

FROM VIN LA930456 - TO VIN VA121160 [SX110251M](#) -> [SX110257M](#) -> [SX110256M](#)

FROM VIN VA121161 [SX110257M](#) -> [SX110256M](#)

**Poz.24 – Grease - Can Be Used Instead Of Oil In Swivel Pin Housing,375cc = 375ml,one shot**

FROM VIN LA930456 [STC3435](#)

**Poz.25 - Kit-swivel pin-upper – horní čep s ložiskem – Defender Td5**

Less Anti-Lock Braking System FROM VIN XA159807 bez ABS [TAR100040](#)

4 Wheel Anti-Lock Braking System FROM VIN XA159807 s ABS [TAR100050](#)

**Poz.26 - O-Ring FROM VIN XA159807 [TYX100570](#)**

**Poz.27 - Clip-cable FROM VIN LA930456 [NTC6994](#)**

**Poz.28 - Seal-antilock brake system sensor – těsnění ABS senzoru**

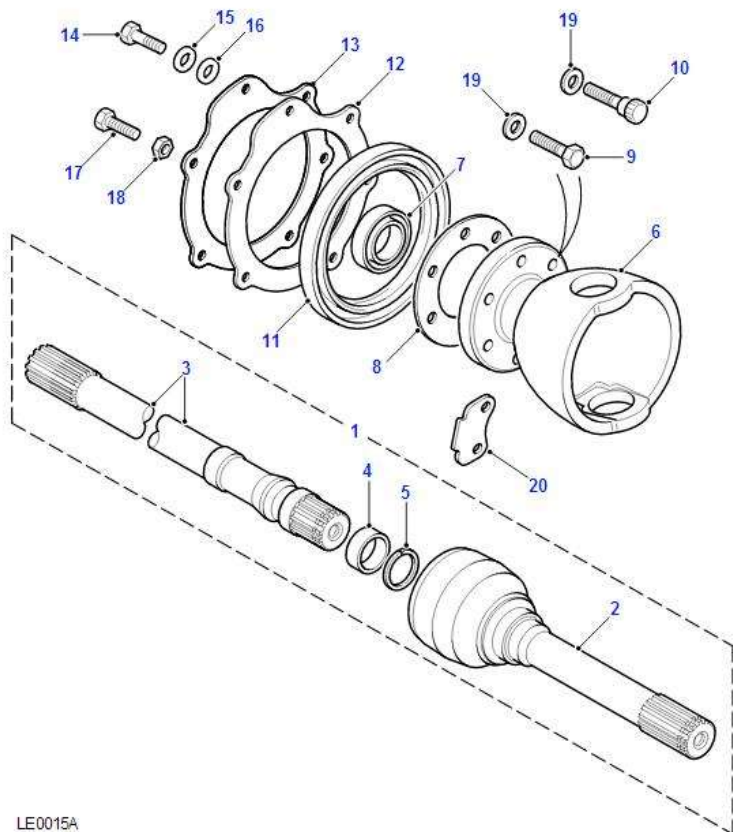
4 Wheel Anti-Lock Braking System [FTC1376](#)

**Poz.29 – Bush – vodící pouzdro ABS senzoru**

Antilock brake system sensor 4 Wheel ABS [FTC1374](#) -> [LR029522](#)

# PŘEDNÍ POLOOSY A REJDOVÁ KOULE

## Drive Shafts For Land Rover Defender 1987 - 2006



LE0015A

### Poz.1 - Driveshaft-front

RH,Axle Code 20L,Axle Code 21L,Axle Code 22L,Axle Code 23L,23 spline shaft  
Less Anti-Lock Braking System

TO VIN KA930455 [FRC3890](#)

LH,Axle Code 20L,Axle Code 21L,Axle Code 22L,Axle Code 23L,23 spline shaft  
Less Anti-Lock Braking System

TO VIN KA930455 [FRC3891](#)

RH,Axle Code 20L,Axle Code 21L,Axle Code 22L,Axle Code 23L,33 spline shaft  
Less Anti-Lock Braking System

TO VIN KA930455 [FTC1332](#)

LH,Axle Code 20L,Axle Code 21L,Axle Code 22L,Axle Code 23L,33 spline shaft  
Less Anti-Lock Braking System

TO VIN KA930455 [FTC1333](#)

RH,Axle Code 61L,Axle Code 61S,Axle Code 63L,Axle Code 64L,24 spline shaft  
FROM VIN LA930456 - TO VIN WA159806 [FTC3146](#) -> [TDB000180](#) -> [TDB500280](#)

Less Anti-Lock Braking System

TO VIN KA930455 [FTC3148](#) -> [FTC3146](#) -> [TDB000180](#) -> [TDB500280](#)

LH,Axle Code 61L,Axle Code 61S,Axle Code 63L,Axle Code 64L,24 spline shaft  
FROM VIN LA930456 - TO VIN WA159806 [FTC3147](#) -> [TDB000190](#) -> [TDB500290](#)

Less Anti-Lock Braking System

TO VIN KA930455 [FTC3149](#) -> [FTC3147](#) -> [TDB000190](#) -> [TDB500290](#)

RH,Axle Code 10M,Axle Code 11M,Axle Code 12M,Axle Code 13M,Axle Code 14M,Axle Code 15M,Axle Code 16M,Axle Code 17M,24 spline shaft,Axle Code 25M,Axle Code 19M  
Front Axle ABS

FROM VIN XA159807 [TDB000180](#) -> [TDB500280](#)

LH,Axle Code 10M,Axle Code 11M,Axle Code 12M,Axle Code 13M,Axle Code 14M,Axle Code 15M,Axle Code 16M,Axle Code 17M,24 spline shaft,Axle Code 25M,Axle Code 19M

Front Axle ABS

FROM VIN XA159807 [TDB000190](#) -> [TDB500290](#)

**Poz.2 - Joint-constant velocity**

Axle Code 20L,Axle Code 21L,Axle Code 22L,Axle Code 23L,23 spline shaft  
Less Anti-Lock Braking System

TO VIN KA930455 [AEU2522](#)

Axle Code 20L,Axle Code 21L,Axle Code 22L,Axle Code 23L,33 spline shaft  
Less Anti-Lock Braking System

TO VIN KA930455 [RTC6862](#)

Axle Code 61L,Axle Code 62L,Axle Code 63L,Axle Code 64L,24 spline shaft  
Less Anti-Lock Braking System

FROM VIN LA930456 - TO VIN WA159806 [STC3051](#) -> [TDJ000010](#)

Axle Code 10M,Axle Code 11M,Axle Code 12M,Axle Code 13M,Axle Code 14M,Axle Code 15M,Axle Code 16M,Axle Code 17M,24 spline shaft,Serviced in Assembly Only

FROM VIN XA159807 [TDJ000010](#)

**Poz.3 - Shaft-front axle half**

RH,Axle Code 20L,Axle Code 21L,Axle Code 22L,Axle Code 23L

Less Anti-Lock Braking System,LHD,RHD

TO VIN KA930455 - TO 23L12092, TO 20L48865, TO 21L33355, TO 22L27847 [AEU2520](#)

TO VIN KA930455 - (A)FROM 22L27848, A)FROM 23L12093, A)FROM 20L48866, A)FROM 21L33356 - (A)FROM 22L27848, A)FROM 21L33356 [RTC6754](#)

LH,Axle Code 20L,Axle Code 21L,Axle Code 22L,Axle Code 23L

Less Anti-Lock Braking System,LHD,RHD

TO VIN KA930455 - TO 23L12092, TO 20L48865, TO 21L33355, TO 22L27847 [AEU2521](#)

TO VIN KA930455 - (A)FROM 22L27848, A)FROM 23L12093, A)FROM 20L48866, A)FROM 21L33356 - (A)FROM 22L27848, A)FROM 21L33356 [RTC6755](#)

RH,Axle Code 61L,Axle Code 61S,Axle Code 63L,Axle Code 64L

FROM VIN LA930456 - TO VIN WA159806 [STC3049](#) -> [TDC000020](#)

LH,Axle Code 61L,Axle Code 61S,Axle Code 63L,Axle Code 64L

FROM VIN LA930456 - TO VIN WA159806 [STC3050](#) -> [TDC000030](#)

RH,Axle Code 10M,Axle Code 11M,Axle Code 12M,Axle Code 13M,Axle Code 14M,Axle Code 15M,Axle Code 16M,Axle Code 17M

FROM VIN XA159807 [TDC000020](#)

LH,Axle Code 10M,Axle Code 11M,Axle Code 12M,Axle Code 13M,Axle Code 14M,Axle Code 15M,Axle Code 16M,Axle Code 17M

FROM VIN XA159807 [TDC000030](#)

**Poz.4 - Spacer**

Axle Code 20L,Axle Code 21L,Axle Code 22L,Axle Code 23L

TO VIN KA930455 [FTC254](#)

FROM VIN LA930456 - TO VIN WA159806 [RTC5841](#) -> [TYF000010](#)

Axle Code 10M, 11M, 12M, 13M, 14M, 15M, 16M, 17M

FROM VIN XA159807 [TYF000010](#)

**Poz.5 – Circlip**

front axle shaft to CV joint,Axle Code 20L,Axle Code 21L,Axle Code 22L,Axle Code 23L  
90"" Wheelbase

TO VIN KA930455 - (A)TO 21L33355LH, A)TO 23L12092LH, A)TO 20L48865RH, A)TO 22L27847RH [RTC4820](#)

FROM VIN LA930456 - TO VIN WA159805 [STC579](#) -> [TDL100240](#)

front axle shaft to CV joint,Axle Code 10M, 11M, 12M, 13M, 14M, 15M, 16M, 17M

FROM VIN XA159807 [TDL000010](#) -> [TDL100240](#)

**Poz.6 - Housing-swivel pin bearing – *rejdivá koule***

Axle Code 20L,Axle Code 21L,Axle Code 22L,Axle Code 23L

TO VIN WA159961 [FRC2644](#) -> [FTC5105](#)

Axle Code 61L,Axle Code 61S,Axle Code 63L,Axle Code 64L

[FRC7065](#) -> [FTC5366](#)

Axle Code 10M, 11M, 12M, 13M, 14M, 15M, 16M, 17M

FROM VIN WA145795 [TIR100000](#) -> [FRC7065](#) -> [FTC5366](#)

**Poz.7 - Seal-front driveshaft** – *gufero poloosy v rejdové kouli*

Axle Code 20L,Axle Code 21L,Axle Code 22L,Axle Code 23L

With Rear Drum Brakes [571718](#)

**Axle Code 61L,Axle Code 61S,Axle Code 63L,Axle Code 64L**

**Front Axle Solid Disc,With 4 Wheel Disc-Brake** [FTC3276](#)

**Poz.8 - Gasket-swivel pin bearing housing to axle case** [FTC3646](#)

**Poz.9 – Bolt, M10, Hexagonal head** - *M10x32 (dřík 10mm), hlava 12tihran (bi-hex) velikost klíče 14mm (OEM 17mm ??), potřeba je 6ks - viz poznámka*

M10,Hexagonal TO VIN VA118090 [FTC3456](#) -> [TYG100590](#) -> [UYG500050](#)

M10,double hex FROM VIN VA118091 [TYG100590](#) -> [UYG500050](#)

**Poz.10 – Bolt, dowel, vymešovací šroub polohy rejdové koule, potřeba je 1ks – viz poznámka**

- M10,Hexagonal,dowel TO VIN VA118090 [FTC3454](#) -> [TYG100580](#) -> [UYG500040](#)

- M10,double hex,dowel FROM VIN VA118091 [TYG100580](#) -> [UYG500040](#)

**Poz.11 - Seal-swivel pin housing** 9MM [FRC2889](#) -> [FTC3401](#) -> [LR059968](#)

**Poz.12 - Washer-sealing** – *těsnící podložka držáku gufera rejdové koule, 7děr*

Axle Code 20L,Axle Code 21L,Axle Code 22L,Axle Code 23L [FRC4206](#)

**Poz.13 - Plate-oil seal retainer** – *držák gufera rejdové koule*

**6 šroubů** - Axle Code 61L,Axle Code 61S,Axle Code 63L,Axle Code 64L [571755](#) -> [RRY500180](#)

7 šroubů - Axle Code 20L,Axle Code 21L,Axle Code 22L,Axle Code 23L [FRC4142](#)

**Poz.14 – Screw** – *šroub pro držák gufera rejdové koule M6x12*

**M6 X 12MM Flanged Head, Axle Code 61L, 61S, 63L, 64L** [FS106125L](#)

M6 X 12MM Hexagonal Head,Axle Code 20L, 21L, 22L, 23L [SH106121L](#)

**Poz.15 – Washer M6 sprung** – *pérová podložka M6*

Axle Code 20L, 21L, 22L, 23L [WL106001L](#) -> [WL106002](#)

**Poz.16 – Washer M6** – *podložka M6*

Axle Code 20L, 21L, 22L, 23L [WA106001L](#) -> [WA106041L](#) -> [WA106042](#)

**Poz.17 - Bolt M12**

Axle Code 20L,Axle Code 21L,Axle Code 22L,Axle Code 23L [AFU1234](#)

**Poz.18 - Nut-hexagonal-thin M12**

Axle Code 20L,Axle Code 21L,Axle Code 22L,Axle Code 23L [NT112041L](#)

**Poz.19 - Washer-Plain** – *podložka M10, tloušťka 3,5mm*

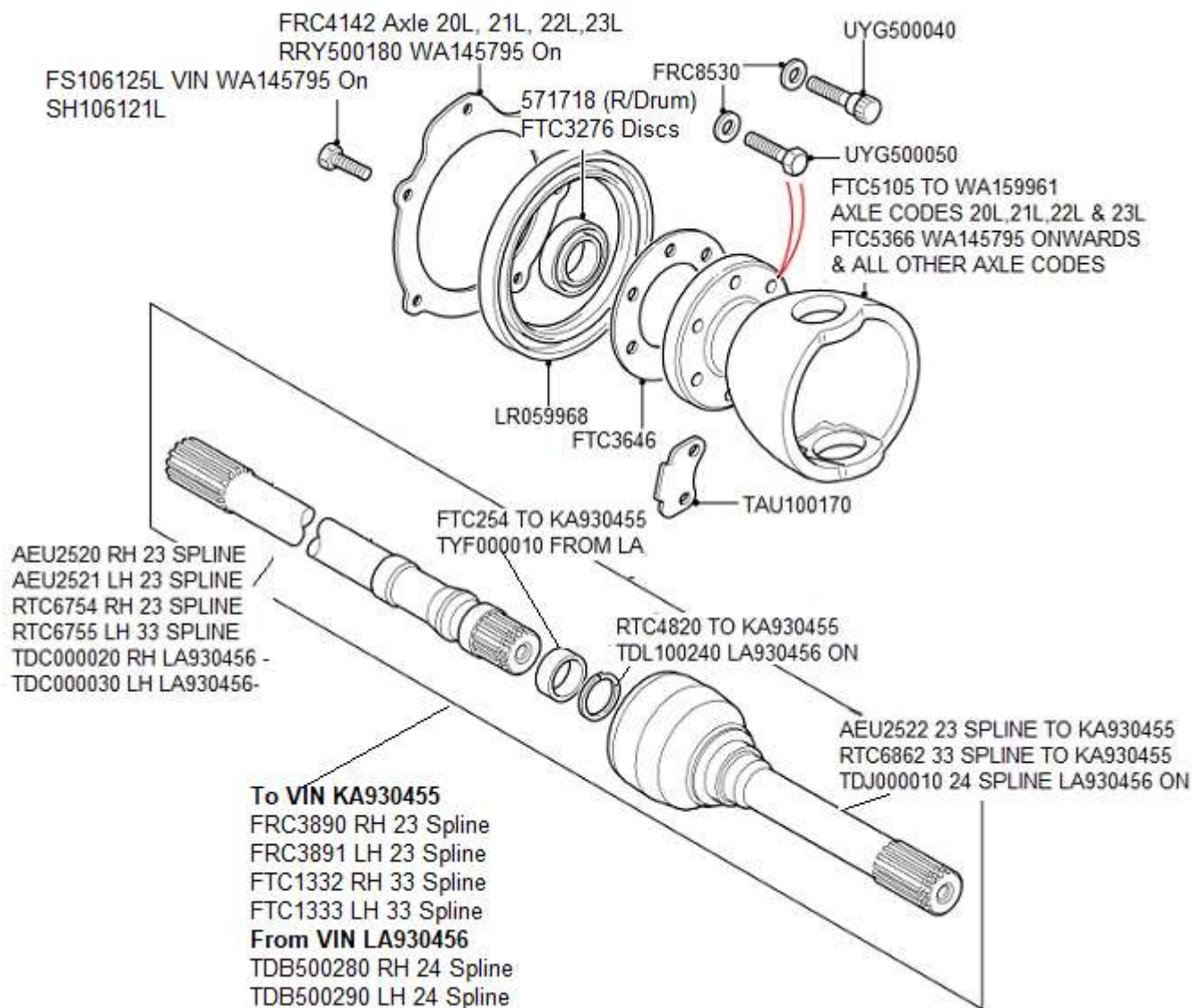
Axle Code 61L,Axle Code 61S,Axle Code 63L,Axle Code 64L [FRC8530](#)

**Poz.20 - Bracket-lock stop**

Axle Code 10M, 11M, 12M, 13M, 14M, 15M, 16M, 17M [TAU100170](#)

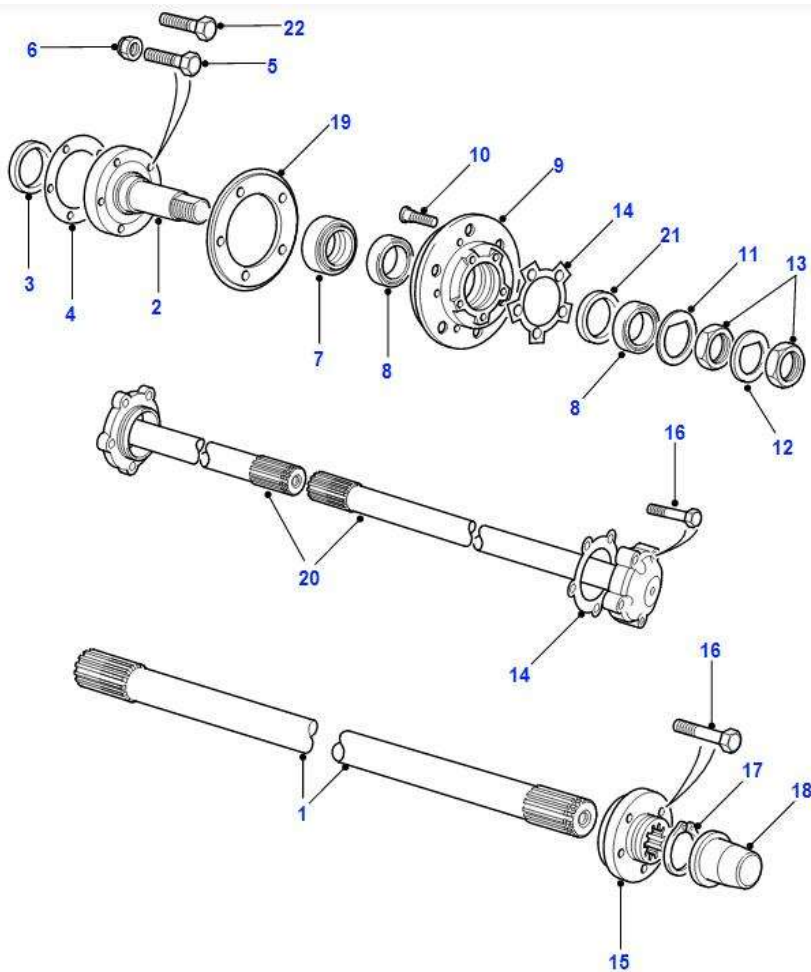
**Poznámka ke šroubům na pozici 9 a 10** – zdánlivě vypadají stejně, ale ten na pozici 10 - UYG500040 – je speciál s delším dříkem (má kratší závitovou část), který přesně a těsně kouskem dříku zapadne i do otvoru příruby na nápravě a vymezuje tak přesně polohu příruby rejdové koule vůči přírubě na nápravě. Tím je dána i správná poloha záklonu svislých čepů těhlice, tzv. castor angle ! V originále má šroub přídomek *dowel*, což primárně znamená hmoždinka, ale v technické angličtině je to rovněž výraz pro *kolík*, v tomto případě vymešovací, stavěcí...





# ZADNÍ POLOOSY A NÁBOJ KOLA

Rear Hubs & Driveshafts - from LA930456 For Land Rover Defender 1987 – 2006



## Poz.1 - Shaft-rear axle half

RH

110,130" Wheelbase

FROM VIN LA930456 - TO VIN 2A638133 - [FTC1724](#)

FROM VIN 2A638134 - [FTC4747](#) -> [TOB500020](#) -> [LR072976](#)

LH

FROM VIN LA930456 - TO VIN 2A638133 - [FTC1725](#)

FROM VIN 2A638134 - [FTC4748](#) -> [TOB500030](#) -> [LR072977](#)

RH,Axle Code 14S,Axle Code 15S,Axle Code 16S,Axle Code 17S

110,130" Wheelbase,90" Wheelbase

FROM VIN 2A638134, FROM VIN 4A671163 - [TOB500020](#) -> [LR072976](#)

LH,Axle Code 14S,Axle Code 15S,Axle Code 16S,Axle Code 17S

110,130" Wheelbase,90" Wheelbase

FROM VIN 2A638134, FROM VIN 4A671163 - [TOB500030](#) -> [LR072977](#)

## Poz.2 - Axle-rear suspension hub stub – nábojka zadního kola

Axle Code 38S,Axle Code 39S

110,130" Wheelbase,With Salisbury Axle

FROM VIN LA930456 - TO VIN WA769310 - [FTC1740](#)

Axle Code 42S,Axle Code 44S,Axle Code 58S,Axle Code 59S

90" Wheelbase

FROM VIN LA930456 - [FTC3188](#)

Axle Code 60S,Axle Code 62L,Axle Code 62S,Axle Code 63S

110,130" Wheelbase,With Land Rover Type Axle

FROM VIN WA769311 - [FTC3188](#)

**Poz.3 – Seal stub axle – vnitřní gufero nábojky**

Axle Code 42S,Axle Code 44S,Axle Code 58S,Axle Code 59S,Inner

FROM VIN LA930456 -> [FTC5268](#)

**Poz.4 - Gasket-stub axle – těsnění příruby nábojky k nápravě**

Rear Axle,Asbestos Free

90"" Wheelbase FROM VIN LA930456 [FTC3648](#)

Rear Axle

110,130"" Wheelbase

FROM VIN LA930456 - TO VIN WA159961 -> [FTC3649](#)

Asbestos Free

4 Wheel Anti-Lock Braking System FROM VIN KA931243 [FTC3650](#)

**Poz.5 – Screw – šroub příruby nábojky k nápravě**

Hexagonal Head,M10 x 25 90"" Wheelbase FROM VIN LA930456 [SX110257M](#) -> [SX110256M](#)

Hexagonal Head,M10 x 30 110,130"" Wheelbase 110,130"" Wheelbase [SX110301](#)

*Šroubů je celkem 6ks (obrázek mate, je tam jen 5 děr !) – u nápravy Salisbury se 4 šroubují do dílu [FTC3306](#) (držák brzdiče) a 2 jsou samostatné se samojistnou maticí – viz poz.22. Pevnost šroubu 10.9*

**Poz.6 - Nut – Hex – matice samojistná s přírubou (2ks)**

M10,nyloc,flange FROM VIN LA930456 [NY110047L](#)

**Poz.7 - Seal assembly-front/rear hub – gufero náboje kola**

Inner FROM VIN LA930456 [FTC4785](#)

**Poz.8 - Bearing-front/rear axle hub – kuželíkové ložisko náboje kola (2ks)**

FROM VIN LA930456 [STC4382](#)

LM 603049/LM 603011 např. Timken SET 37

**Poz.9 - Hub assembly-front & rear – náboj kola**

TO VIN LA930455 [RUB101740](#) -> [FTC942](#) -> [FTC0942](#) -> [RUB500240](#)

FROM VIN LA930456 - TO VIN WA159806 [FTC942](#) -> [FTC0942](#) -> [RUB500240](#)

FROM VIN WA159807 - TO VIN 5A999999 [FTC0942](#)-> [RUB500240](#)

FROM VIN 6A000001 [RUB500240](#)

**Poz.10 - Stud – šroub kola**

FROM VIN LA930456 - TO VIN 2A631135 [FRC5926](#) -> [RUF000020](#) -> [RUF500010](#)

FROM VIN 2A631136 [RUF000020](#) -> [RUF500010](#)

**Poz.11 - Washer-front & rear hub nut tab – vymežovací podložka ložiska náboje**

FROM VIN LA930456 - TO VIN TA996892 [FTC3185](#)

FROM VIN TA996893 [FTC5241](#)

**Poz.12 - Washer-Lock – zajišťovací podložka seřizovací matice**

Outer FROM VIN LA930456 - TO VIN WA159806 [FTC3179](#)

**Poz.13 - Locknut – seřizovací a zajišťovací matice**

FROM VIN LA930456 - TO VIN WA159806 [FRC8700](#) – 2kusy

FROM VIN XA159807 [RFD100000](#) - 1kus

**Poz.14 - Gasket-axle shaft drive member – těsnění unašeče poloosy**

FROM VIN LA930456 [571752](#)

**Poz.15 - Flange-driving shaft joint – unašeč poloosy (24 drážek)**

TO VIN KA930455 [FTC859](#) -> [RUC105200](#)

FROM VIN LA930456 [RUC105200](#)

**Poz.16 - Bolt – šroub unašeče poloosy (5 kusů)**

Pre-Impregnated With Adhesive, M10 x 45 FROM VIN LA930456 [BX110095M](#)

**Poz.17 - Circlip – zajišťovací segerovka poloosy**

FROM VIN LA930456 [549473](#)

**Poz.18 - Cap-driveshaft coupling bolt locking**

with Land Rover logo FROM VIN VA110616 [FTC5414](#)

Less Logo FROM VIN LA930456 - TO VIN VA110615 [FTC943](#) -> [FTC5414](#)

**Poz.19 - Plate-front & rear stub axle locking – zajišťovací a krycí kroužek nábojky**

FROM VIN LA930456 [FRC2310](#)

**Poz.20 - Shaft-rear axle half**

RH, 24 spline shaft

90"" Wheelbase FROM VIN LA930456 - TO VIN 4A671162 [FTC3270](#)

LH, 24 spline shaft

90"" Wheelbase FROM VIN LA930456 - TO VIN 4A671162 [FTC3271](#)

**Poz.21 - Spacer**

Purple, 15.5mm FROM VIN XA159807 [TOF100000](#)

Yellow, 15.4mm FROM VIN XA159807 [TOF100010](#)

Red, 15.3mm FROM VIN XA159807 [TOF100020](#)

Blue, 15.2mm FROM VIN XA159807 [TOF100030](#)

Green, 15.1mm FROM VIN XA159807 [TOF100040](#)

Black, 15.0mm FROM VIN XA159807 [TOF100050](#)

White, 14.9mm FROM VIN XA159807 [TOF100060](#)

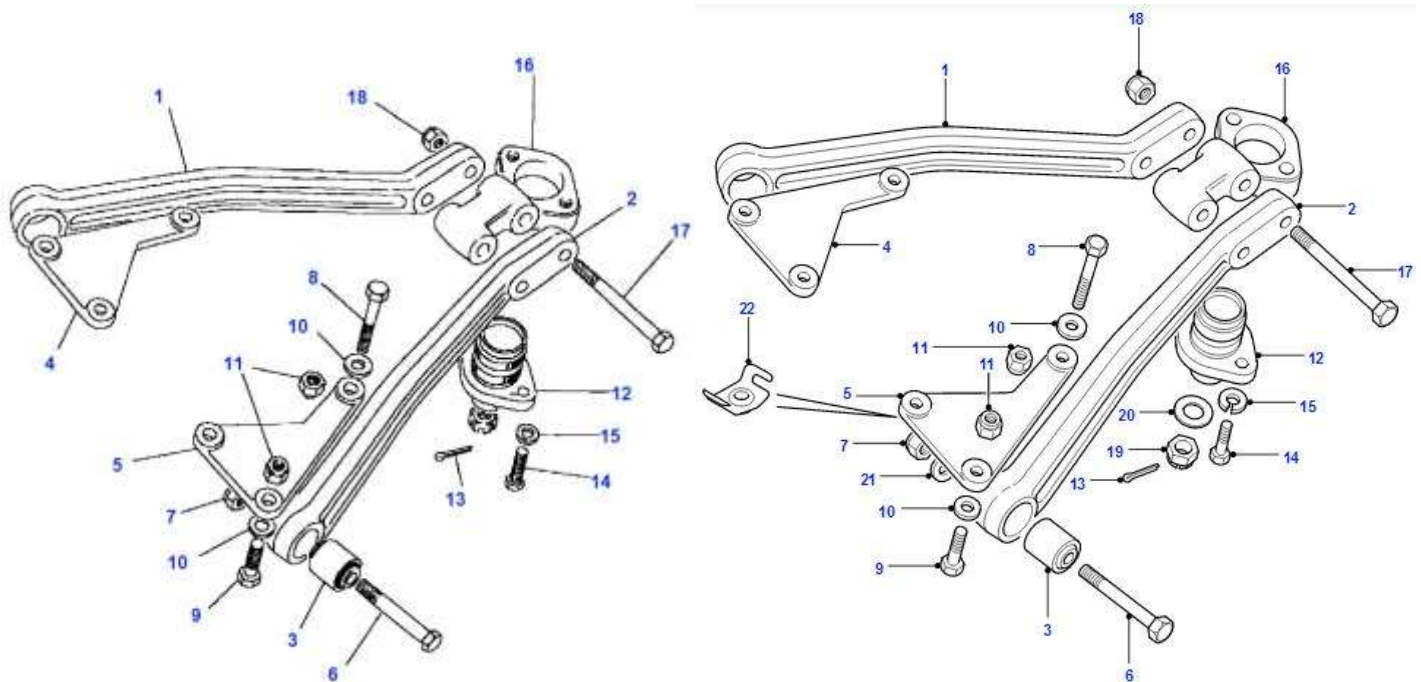
**Poz.22 - Bolt**

TO VIN LA930455 Hexagonal Head,M10 x 35 [BX110071M](#) -> [BX110076M](#)

FROM VIN LA930456 Hexagonal Head,M10 x 55 [BX110111L](#) -> [FC110116](#)

# HORNÍ ZÁVĚS ZADNÍ NÁPRAVY – A-RÁM

Genuine Top Link, Fulcrum & Ball Joint For Land Rover Defender 1987 - 2006



**Poz.1 - Link assembly-rear suspension upper, RH** [NTC2706](#)

**Poz.2 - Link assembly-rear suspension upper, LH** [NTC2707](#) -> [LR045324](#)

**Poz.3 - Bush-rear suspension upper link – silentblok ramene -** [NTC1773](#)

**Poz.4 - Bracket, RH -** [575615](#)

**Poz.5 - Bracket, LH -** [575616](#)

**Poz.6 - Bolt 3/4 UNF x 4 Inch -** [BH612321](#)

**Poz.7 - Locknut -** [NY612041](#) -> [NY612042](#)

**Poz.8 - Bolt, Hexagonal Head, M10 x 55, pevn. 10.9, DIN 933 (DIN 931 s dříkem) -** [BX110111L](#) -> [FC110116](#)

**Poz.9 - Bolt, M10 x 45, pevn. 10.9, potřeba 2ks -** [BX110091L](#)

**Poz.10 - Washer, M10,oversize,Plain -** [WC110061L](#) -> [WC110067L](#) -> [WC110066](#)

**Poz.11 - Nut, M10,Hexagonal Head,nyloc -** [NY110051L](#) -> [FY110056](#)

**Poz.12 - Joint-rear suspension upper link ball – čep A-rámu**

90"" Wheelbase - i pro 110ku

TO VIN EA329986 [572337](#) -> [NTC4260](#) -> [NTC9932](#) -> [ANR1799](#) -> [RHF500110](#)

FROM VIN EA329987 - TO VIN JA914425 [NTC4260](#) -> [NTC9932](#) -> [ANR1799](#) -> [RHF500110](#)

FROM VIN JA914426 - TO VIN KA930263 [NTC9932](#) -> [ANR1799](#) -> [RHF500110](#)

FROM VIN KA930264 [ANR1799](#) -> [RHF500110](#)

**Poz.13 - Pin-split 3.2 x 32**

FROM VIN JA914426 [PS106321L](#) -> [UYT500030](#)

TO VIN JA914425 [PS608101L](#)

**Poz.14 - Screw- zajišťovací šroub čepu (2ks)**

TO VIN KA930263 Hexagonal Head,5/16UNF x 1 [SH605081L](#)

FROM VIN KA930264 Flanged Head,M8 x 20MM [FS108207L](#)

**Poz.15 - Washer-Spring 5/16**

TO VIN KA930263 [WM600051L](#)

**Poz.16 - Bracket-rear axle fulcrum**

TO VIN KA930263 [NRC3923](#)

FROM VIN KA930264 [ANR3037](#) -> [LR045401](#)

**Poz.17 - Bolt 1/2UNF x 6 1/2** [253952](#)

**Poz.18 - Nut – Hex**

rear suspension upper link to chassis bracket,nyloc,Hexagonal,1/2UNF [NY608042](#)

Poz.19 (900) - Nut – Hex

Also serviced as part of a kit,20MM

FROM VIN EA329987 - TO VIN JA914425 [NTC4618](#) [RYH501090](#)

Poz.20 (901) - Washer

Also serviced as part of a kit,20MM

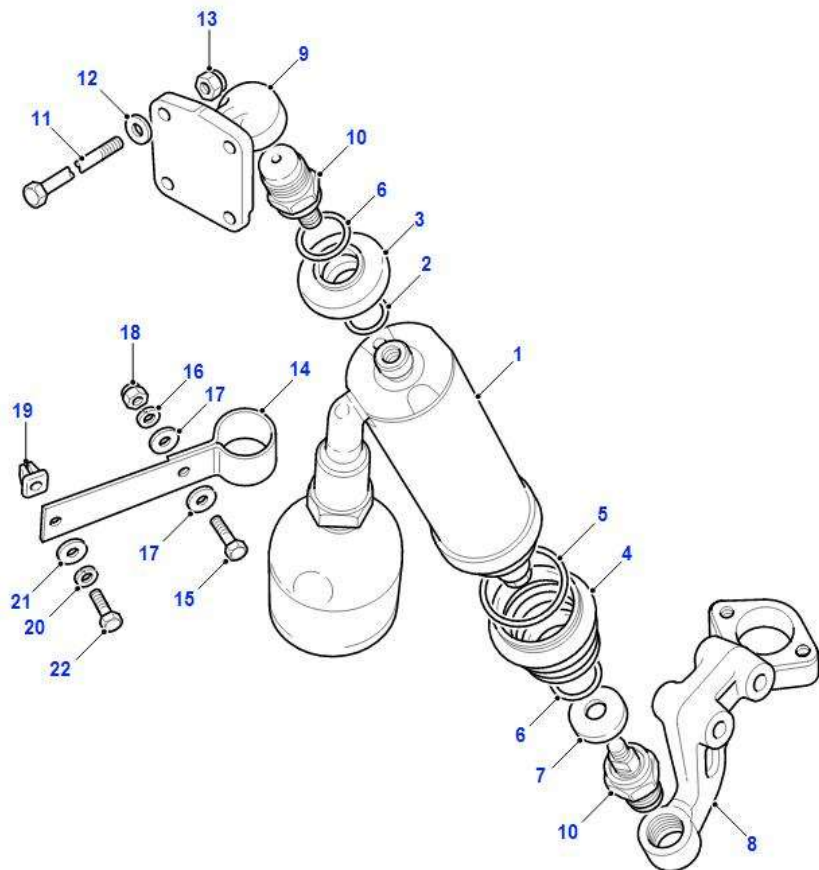
FROM VIN EA329987 - TO VIN JA914425 [WB120001](#) -> [WB120006](#)

Poz. (902) - Ring-Snap

TO VIN EA329986 [592445](#)

# SAMONIVELAČNÍ JEDNOTKA BOGE

Genuine Self Levelling Unit (110''') For Land Rover Defender 1987 - 2006



**Poz.1 - Control unit-self levelling** [NRC7050](#)

**Poz.3 - Gaiter-self levelling unit ball joint, Upper** [NRC5707](#)

**Poz.4 - Gaiter-self levelling unit ball joint, Lower** [NRC6561](#)

**Poz.7 - Seal** [NRC8007](#)

**Poz.8 - Bracket-rear axle fulcrum** TO VIN KA930263 [90575878](#)  
**FROM** VIN KA930264 [ANR3036](#) - metrické uchycení

**Poz.10 - Joint-self levelling unit ball** [575882](#)

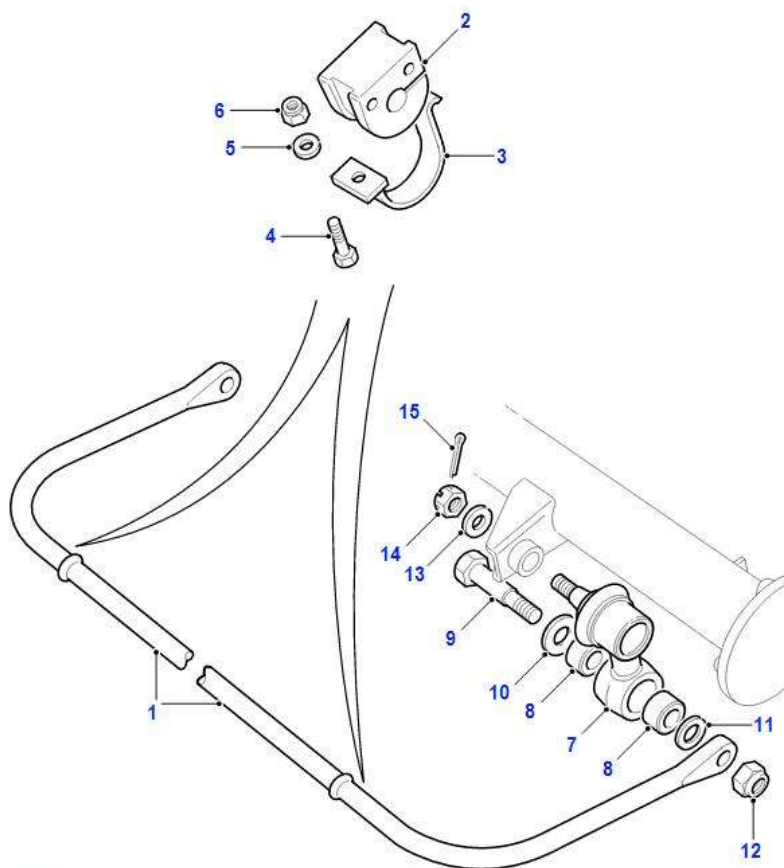
*Kloub- kužel 31,7mm / závit matice M40x1,5, závit čepu M14x1,*

*Např. A.B.S. Podpora-/ Kloub (220262)*

**Poz.11 - Bolt M10x180 (závit 35mm)** [BH110351](#)

# STABILIZÁTOR ZADNÍ NÁPRAVY

## Anti Roll Bar For Land Rover Defender 1987 – 2006 Rear



AHEXKC2A

AXLES & SUSPENSION - REAR SUSPENSION - ANTI ROLL BAR - DEFENDER 90 - 1995 (1996)

D.P. PUBLICATIONS

### Poz.1 - Bar assembly-anti-roll rear suspension

90"" Wheelbase [ANR4344](#) -> [LR033038](#)

110,130"" Wheelbase FROM VIN MA960430 [ANR4344](#) -> [LR033038](#)

110,130"" Wheelbase TO VIN MA960429 [NRC6221](#) -> [ANR4344](#) -> [LR033038](#)

### Poz.2 - Bush-anti-roll bar, Rear, 50 LE - *silentblok zadního stabilizátoru*

90"" Wheelbase [EGP1889](#)

110,130"" Wheelbase [NRC5674](#)

### Poz.3 - Strap-bolt-protector rear suspension – *klema silentbloku*

90, **110** "" Wheelbase [592773](#) - *Defender 300TDi*

50 LE,90"" Wheelbase TO VIN WA159806 [ANR4548](#)

4.0L V8 L/R EFI Petrol,50 LE,90"" Wheelbase [EGP1661L](#)

90"" Wheelbase FROM VIN XA159807 [EGP1661L](#)

### Poz.4 - Screw – šroub M8x25, pevnost 8.8

Flanged Head,M8 x 20MM FROM VIN XA159807 [FS108207L](#)

110,130"" Wheelbase TO VIN WA159806 M8 x 25,Flanged Head [FS108257L](#) -> [FS108256](#)

50 LE,90"" Wheelbase TO VIN WA159806 [FS108257L](#) -> [FS108256](#)

Hexagonal Head,M10 x 35 90"" Wheelbase TO VIN WA159806 [SH110351L](#)

### Poz.5 - Washer

M8 110,130"" Wheelbase [WA108051L](#) -> [WA108056](#)

M10 50 LE,90"" Wheelbase [WA110061L](#)

M8 50LE [WC108051](#)

M8,sprung [WL108001L](#) [WL108007L](#) [WL108002](#)

### Poz.6 - Nut – Hex

M8,nyloc [NY108041L](#) -> [FY108046](#)

M10,nyloc,flange [NY110047L](#)

**Poz.7 - Joint-ball-lower arm front/rear suspension – rameno stabilizátoru** [NTC1888](#)

**Poz.8 - Bush-lower arm front/rear suspension – silentblok ramene stabilizátoru (4ks na nápravu)** [552819](#)

**Poz.9 - Pin - čep ramene stabilizátoru**

110,130"" Wheelbase [NRC6658](#) -> [RYG501490](#)

90"" Wheelbase [NTC8202](#) -> [RYG501480](#)

**Poz.10 - Washer** [264024](#) -> [RYF500160](#)

**Poz.11 - Washer – podložka M16** [WC116101](#)

**Poz.12 - Nut – Hex, M16,Hexagonal Head,nylon** [NY116041L](#)

**Poz.13 - Washer-Plain M12 x 28** [WC112081L](#)

**Poz.14 - Nut-castle M12** [NC112041](#) -> [NC112046](#)

**Poz.15 - Pin-split 3.2 x 32 - zajišťovací závlačka DIN94 -** [PS106321L](#) -> [UYT500030](#)



592773



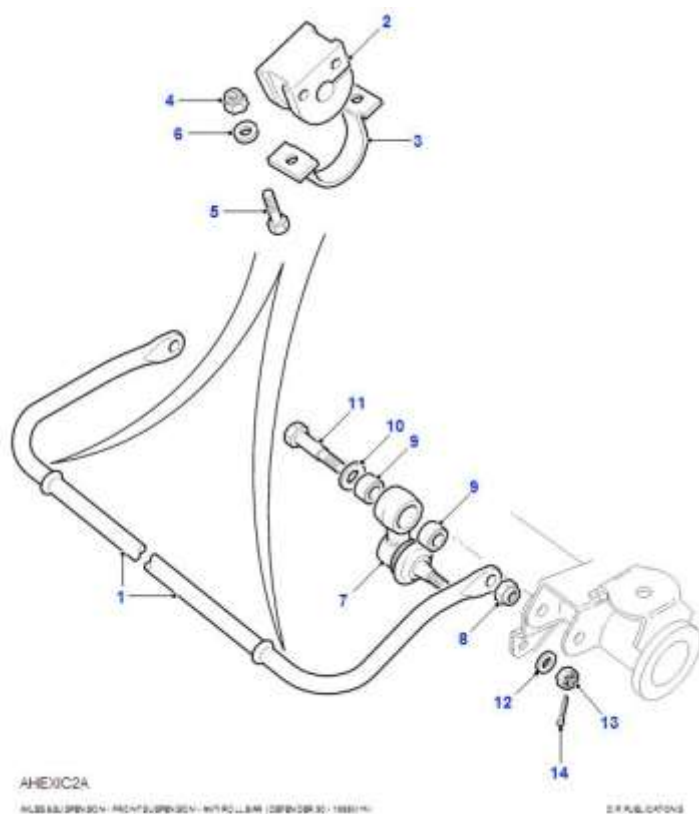
ANR4548



EGP1661L

# STABILIZÁTOR PŘEDNÍ NÁPRAVY

Anti Roll Bar For Land Rover Defender 1987 – 2006 Front



Poz.2 - Bush-anti-roll bar, Front [NTC6828](#)

Poz.7 - Joint-ball-lower arm front/rear suspension [NTC1888](#)

Poz.8 - Nut – Hex, M16,Hexagonal Head,nylon [NY116041L](#)

Poz.9 - Bush-lower arm front/rear suspension [552819](#)

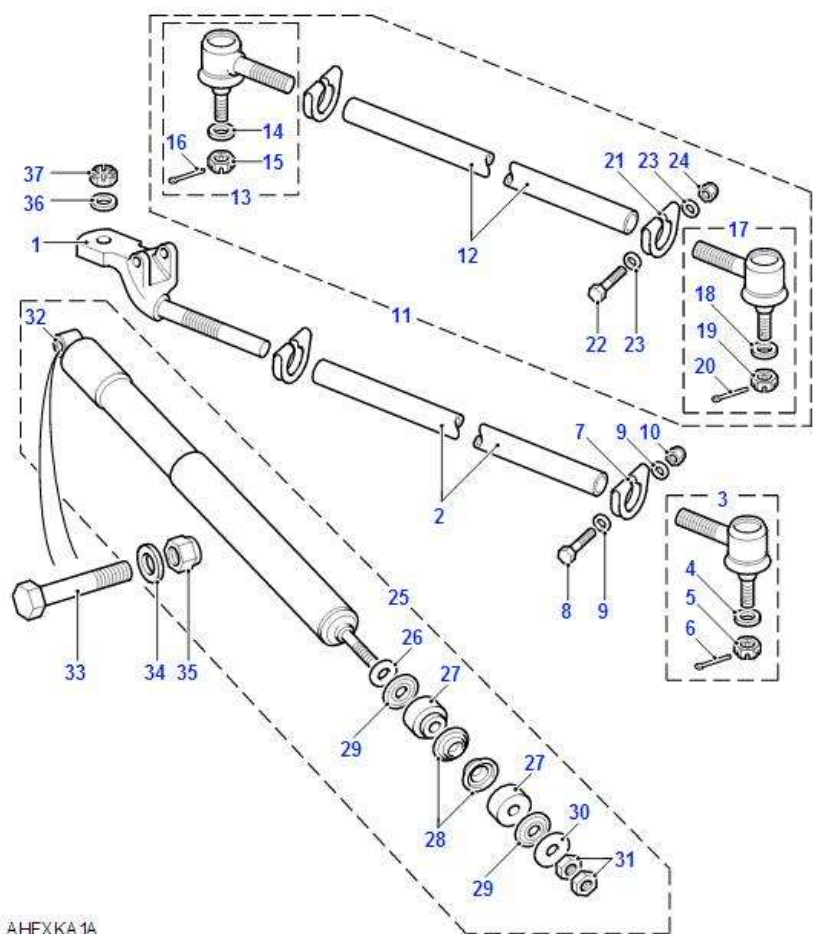
Poz.11 – Pin , With Heavy Duty Suspension [NTC8202](#) -> [RYG501480](#)

Poz.13 - Nut-castle M12 [NC112041](#) -> [NC112046](#)

# ŘÍZENÍ – SPOJOVACÍ TYČE A TLUMIČ

## Genuine Track Rods & Damper For Land Rover Defender 1987 – 2006

<https://parts.jaguarlandroverclassic.com/parts/index/part/id/L1.L1P.L1P01.L1P01075/brand/land-rover/>



AHFXKA 1A

**Poz.1 - Cross rod-eye end – oko přední tyče řízení**

RHD, FROM VIN MA939976 [ANR2858](#)

LHD, FROM VIN MA939976 [ANR2859](#)

RHD, TO VIN LA939975 [NRC8231](#) -> [ANR2858](#)

LHD, TO VIN LA939975 [NRC8232](#) -> [ANR2859](#)

**Poz.2 - Tube – Cross rod, tie bar – přední tyč řízení**

TO VIN JA917433 [NRC5582](#)

FROM VIN JA917434 - TO VIN LA939975 [NRC9741](#)

FROM VIN MA939976 [ANR2860](#)

**Poz.3 - Kit-ball joint, R/H thread – čep tyče řízení** [RTC5869](#)

**Poz.4 - Washer plain, M12 x 28 -** [WC112081L](#)

**Poz.5 - Nut-castle, M12 – korunová matice** [NC112041](#) -> [NC112046](#)

**Poz.6 - Pin-split, 3.2 x 32 – závlačka DIN94** [PS106321L](#) -> [UYT500030](#)

**Poz.7 - Clamp, tube** [577898](#)

**Poz.8 - Bolt, 1/4UNF x 7/8** [BH604151L](#)

**Poz.9 - Washer, 6mm** [WA106041L](#) -> [WA106042](#)

**Poz.10 - Nut - Hex, 1/4,nyloc** [NY604041L](#)

**Poz.11 - End assembly-track rod – spojovací tyč řízení, komplet** [NRC9743](#) -> [QFK500040](#) -> [LR041267](#)

**Poz.12 - Tube, track rod** [NRC9742](#) -> [LR045730](#)

**Poz.13 - Kit-ball joint, RH, R/H thread** [RTC5869](#)

**Poz.14 - Washer plain, M12 x 28 -** [WC112081L](#)

**Poz.15 - Nut-castle, M12 – korunová matice** [NC112041](#) -> [NC112046](#)

**Poz.16 - Pin-split, 3.2 x 32 – závlačka DIN94** [PS106321L](#) -> [UYT500030](#)

**Poz.17 - Kit-ball joint, LH, L/H thread** [RTC5870](#)

**Poz.18 - Washer plain**, M12 x 28 - [WC112081L](#)  
**Poz.19 - Nut-castle**, M12 – *korunová matice* [NC112041](#) -> [NC112046](#)  
**Poz.20 - Pin-split**, 3.2 x 32 – *závlačka DIN94*  
 TO VIN 6A555554 [PS106321L](#) -> [UYT500030](#)  
 FROM VIN 6A555555 [UYT500030](#)  
**Poz.21 - Clamp**, tube [577898](#)  
**Poz.22 - Bolt**, 1/4UNF x 7/8 [BH604151L](#)  
**Poz.23 - Washer**, 6mm [WA106041L](#) -> [WA106042](#)  
**Poz.24 - Nut - Hex**, 1/4,nyloc [NY604041L](#)  
**Poz.25 - Damper assembly-steering** [RTC4472](#)  
**Poz.26 - Washer** [595199](#) -> [QYF500050](#)  
**Poz.27 - Washer-rubber** [568858](#)  
**Poz.28 - Washer-cup**, Intermediate [543819](#) -> [ANR6942](#) -> [QYF500060](#)  
**Poz.29 - Washer** [90575597](#)  
**Poz.30 – Washer**, *velkoplošná podložka* [WJ110007L](#)  
**Poz.31 - Nut – Hex**, narrow [AFU4214](#) -> [QYH500120](#)  
**Poz.32 - Bush-steering damper rubber** [NTC1775](#) -> [QEM500020](#)  
**Poz.33 - Bolt**, Long, M10 x 60 [BH110121L](#)  
**Poz.34 - Washer**, M10 [WA110061L](#)  
**Poz.35 - Nut – Hex**, M10,nyloc,flange [NY110047L](#)  
**Poz.36 - Washer-Plain**, steering drop arm to crossrod,M12 x 28 [WC112081L](#)  
**Poz.37 - Nut-castle**, steering drop arm to crossrod,M12 [NC112041](#) -> [NC112046](#)



**Poz.28 - 543819**

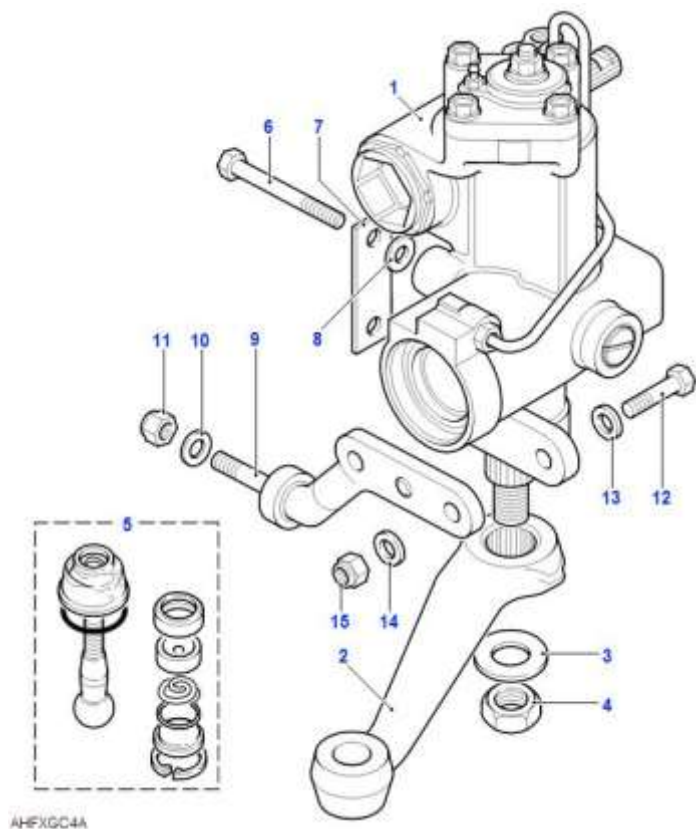


**Poz.29 - 90575597**

# ŘÍZENÍ – PŘEVODKA ŘÍZENÍ

Genuine Steering Box-power-adwest-lightweight (with Power Steering) For Land Rover Defender 1987 - 2006

<https://parts.jaguarlandroverclassic.com/parts/index/part/id/L1.L1P.L1P01.L1P01065/brand/land-rover/>



AHFxGC4A



*Převodka LHD QAF500120*

## Poz.1 - Box assembly-steering

Adwest,exchange,lightweight ,2.8L 6 Cyl BMW M52 Petrol,RHD -> [LR009822](#)

6 Cylinder,Adwest,lightweight,New , 50 LE,RHD

FROM VIN 2A622424 - TO VIN 4A680180 [QAF000140](#) -> [QAF500030](#) -> [QAF500110](#)

FROM VIN 4A680181 [QAF500030](#) -> [QAF500110](#)

Adwest,lightweight,New , 50 LE,LHD

**FROM VIN MA955520 - TO VIN 1A622423** [STC2845](#) -> [QAF000150](#) -> [QAF500120](#)

FROM VIN 2A622424 - TO VIN 4A675735 [QAF000150](#) -> [QAF500040](#) -> [QAF500120](#)

FROM VIN 4A675736 [QAF500040](#) -> [QAF500120](#)

Remanufactured, 6 Cylinder,Adwest,lightweight 50 LE,RHD

FROM VIN 4A680181 [QAF500030E](#)

Remanufactured,Adwest,lightweight

50 LE,LHD FROM VIN 4A675736 [QAF500040E](#)

50 LE,CDN/MEX/USA,LHD TO VIN 4A680180 [STC8383E](#)

50 LE,RHD TO VIN 4A680180 [STC8384E](#)

CDN/MEX/USA, 50 LE,LHD [STC8684E](#)

Improved Seal,New Part-Please Check For Reman Version, 6 Cylinder,Adwest,New,lightweight

50 LE,RHD FROM VIN 4A680181 [QAF500110](#)

New Part-Please Check For Reman Version,Adwest,New,lightweight

50 LE,LHD FROM VIN 4A675736 [QAF500120](#)

2.8L 6 Cyl BMW M52 Petrol,RHD [STC3947](#)

6 Cylinder,Adwest,New,lightweight

50 LE,RHD FROM VIN MA955520 - TO VIN 1A622423 [STC2846](#) -> [QAF000140](#) -> [QAF500110](#)

50 LE TO VIN JA919038 [STC398](#) -> [STC837](#) [STC887](#) -> [STC2846](#) -> [QAF000140](#) ->  
[QAF500030](#) -> [QAF500110](#)

50 LE,RHD

FROM VIN JA919039 - TO VIN KA922208 [STC837](#) [STC887](#) -> [STC2846](#) -> [QAF000140](#)  
-> [QAF500030](#) -> [QAF500110](#)

FROM VIN KA922209 - TO VIN MA955519 [STC887](#) -> [STC2846](#) -> [QAF000140](#) ->  
[QAF500030](#) -> [QAF500110](#)

Adwest,New,lightweight

CDN/MEX/USA, 50 LE,LHD [STC8684](#)

50 LE,LHD TO VIN MA955519 [STC888](#) -> [STC2845](#) -> [QAF000150](#) -> [QAF500120](#)

**Poz.2 - Lever-drop arm steering - páka převodky řízení**

RHD TO VIN 2A624052 [STC1044](#) -> [QFW000020](#)

RHD FROM VIN 2A624053 [QFW000020](#)

LHD TO VIN 2A624052 [STC1045](#) -> [QFW000030](#)

LHD FROM VIN 2A624053 [QFW000030](#)

**Poz.3 - Washer-steering box drop arm nut tab, zajišťovací podložka upínací matice páky**

Adwest, 48MM [600265](#)

Adwest, 60MM [STC874](#)

**Poz.4 - Nut - Hex., drop arm to steering box [NT614041L](#)**

**Poz.5 - Joint-drag link ball, Kit - skládaný kulový čep páky převodky řízení**

FROM VIN 2A624053 [RBG000010](#)

TO VIN 2A624052 [RTC4198](#) -> [STC3295](#) -> [RBG000010](#)

**Poz.6 - Bolt, Hexagonal Head,M12 x 20 [BX112201](#) -> [QYG500140](#)**

**Poz.7 - Washer – Tab [572077](#)**

**Poz.8 - Washer, M12,Plain,Standard [WA112081L](#)**

**Poz.9 - Bar-tie-bent forging**

LHD TO VIN MA940009 [594946](#)

RHD TO VIN MA940009 [594947](#)

FROM VIN MA940010 [ANR2994](#) -> [LR041261](#)

**Poz.10 - Washer, ½ [4905](#)**

**Poz.11 - Nut - Hex, nyloc,Hexagonal,1/2UNF [NY608042](#)**

**Poz.12 - Bolt, šroub**

M12 x 60 FROM VIN MA940010 [BH112121L](#)

7/16UNF x 2 TO VIN MA940009 [BH607161L](#)

**Poz.13 - Washer, podložka**

7/16,Plain TO VIN MA940009 [3261L](#)

M12,Plain,Standard FROM VIN MA940010 [WA112081L](#)

**Poz.14 - Washer,**

No 10,Plain TO VIN MA940009 [217245](#) -> [KYF500070](#)

M12,Plain,Standard FROM VIN MA940010 [WA112081L](#)

**Poz.15 - Nut – Hex**

M12,Hexagonal Head,nyloc FROM VIN MA940010 [NY112041L](#) -> [FY112046](#) -> [RYH500510](#)

nyloc,7/16UNF TO VIN MA940009 [NY607041L](#)

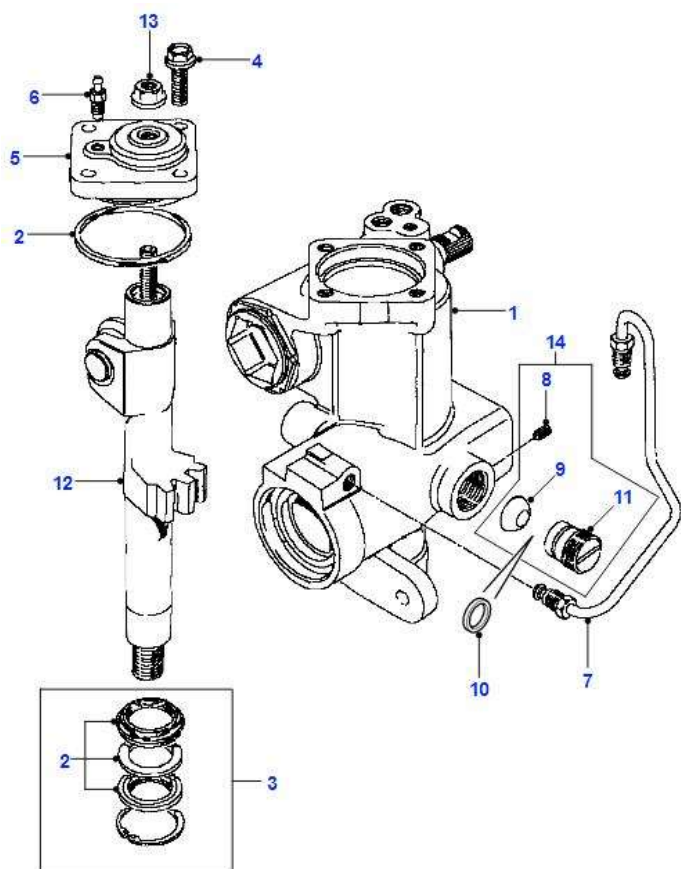


Sada skládaného čepu RBG000010

# ŘÍZENÍ – SVISLÁ HŘÍDEL PŘEVODKY ŘÍZENÍ

Genuine Sector Shaft-adwest Lightweight (with Power Steering) For Land Rover Defender 1987 - 2006

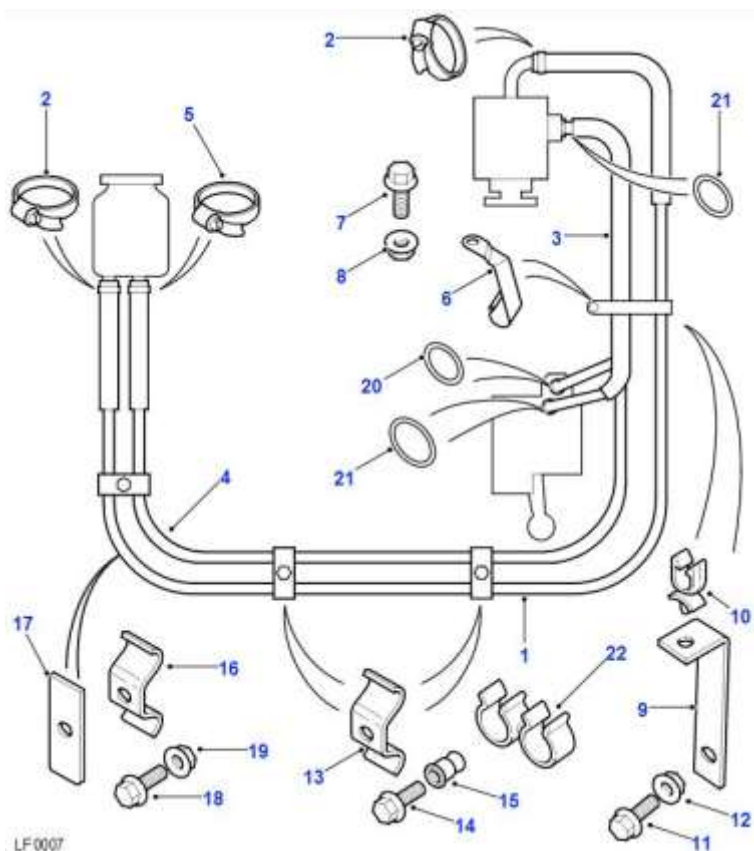
<https://parts.jaguarlandroverclassic.com/parts/index/part/id/L1.L1P.L1P01.L1P01045/brand/land-rover/>



# ŘÍZENÍ – TRUBKY, HADICE

Genuine Power Steering Pipes (lhd,with Power Steering) ((v)from Ja918810)  
For Land Rover Defender 1987 – 2006

<https://parts.jaguarlandroverclassic.com/parts/index/part/id/L1.L1P.L1P01.L1P01010/brand/land-rover/>



**Poz.1 - Hose - power assisted steering reservoir to pump, hadice mezi nádržkou a servopumpou**

2.5L 4 Cyl 300 Series TDi FROM VIN MA939976 [ANR2485](#)

4.0L V8 L/R EFI Petrol,50 LE, Automatic Transmission FROM VIN JA918810 [ANR5782](#)

3.5L V8 Twin Carb Petrol FROM VIN JA918810 [NTC2595](#)

2.5L 4 Cyl 200 Ser/TDi Tur Die FROM VIN JA918810 - TO VIN LA939975 [NTC9071](#)

All 4 Cylinder Petrol Engines,LHD FROM VIN JA918810 [NTC9073](#)

NA Diesel FROM VIN JA918810 [NTC9073](#)

2.5L 5 Cyl Turbo Diesel,Td5,With Power Steering FROM VIN XA159807 [QEH102570](#)

**Poz.2 - Clip-Hose, 25mm, hadicová spona**

FROM VIN JA918810 [CN100258L](#)

**Poz.3 - Pipe assembly-pump to steering box, hadice mezi servopumpou a převodkou**

TDi Turbo Diesel FROM VIN JA918810 [ANR2914](#) -> [ANR6656](#)

2.5L 4 Cyl 300TDi FROM VIN MA939976 [ANR2136](#) -> [ANR2914](#) -> [ANR6656](#)

4 Cyl 200 Series TDi FROM VIN JA918810 - TO VIN LA939975 [NTC9074](#)

J, 50 LE,Petrol V8 L/R EFI FROM VIN JA918810 [NTC9099](#)

All 4 Cylinder Petrol Engines FROM VIN JA918810 [NTC9704](#)

NA Diesel FROM VIN JA918810 [NTC9704](#)

4.0L V8 EFI Petrol,50 LE,LHD FROM VIN JA918810 [QEP105130](#) -> [QEP105770](#)

2.5L 5 Cyl L/R Turbo Diesel,LHD,Td5 FROM VIN XA159807 [QEP105130](#) -> [QEP105770](#)

**Poz.4 - Pipe assembly-steering box to reservoir, hadice mezi převodkou a nádržkou**

TDi Turbo Diesel FROM VIN MA939976 [ANR2487](#) -> [ANR6655](#) -> [QEH102390](#)

2.5L 4 Cyl 300 Series TDi FROM VIN JA918810 [ANR6655](#) -> [QEH102390](#)

3.5L Twin Carb Petrol,LHD FROM VIN JA918810 - TO VIN LA939975 [NTC8860](#)

- 4 Cylinder NA Diesel,LHD FROM VIN JA918810 - TO VIN LA939975 [NTC8860](#)  
 2.5L 4 Cyl 200 Ser/TDI Tur Die,LHD FROM VIN JA918810 - TO VIN LA939975 [NTC8860](#)  
 4.0L V8 L/R EFI Petrol,50 LE FROM VIN JA918810 [QEH102380](#)  
 4 Cyl TDi FROM VIN JA918810 [QEH102400](#) -> [QEH102390](#)  
 2.5L 5 Cyl L/R Turbo Diesel,LHD,Td5 FROM VIN XA159807 [QEP104971](#) -> [QEP105450](#)  
**Poz.5 - Clip-Hose, 20mm** FROM VIN JA918810 [CN100208L](#)  
**Poz.6 - Clip-support boss, Pipe**  
 All 4 Cylinder Petrol Engines FROM VIN JA918810 [NTC3791](#)  
 NA Diesel FROM VIN JA918810 [NTC3791](#)  
**Poz.7 - Screw-flanged head, M6 X 16MM** FROM VIN JA918810 [FS106167L](#)  
**Poz.8 - Nut-flange, M6** FROM VIN JA918810 [FN106047L](#)  
**Poz.9 - Bracket Support, TDi** FROM VIN JA918810 [NTC8263](#)  
**Poz.10 - Clip-harness, 14.5MM,6.5mm hole, TDi** *klips pro hadici* FROM VIN JA918810 [ADU8363L](#)  
**Poz.11 - Screw-flanged head, to reinforcement assy,M6 X 16MM ,TDi** FROM VIN JA918810 [FS106167L](#)  
**Poz.12 - Nut-flange, M6** FROM VIN JA918810 [FN106047L](#)  
**Poz.13 - Clip-Pipe**  
 FROM VIN JA918810 - TO VIN LA939975 [NRC6302](#) -> [QGM500110](#)  
 FROM VIN MA939976 [NTC9208](#)  
**Poz.14 - Screw-flanged head, M6 X 16MM** FROM VIN JA918810 [FS106167L](#)  
**Poz.15 - Nutsert-blind, M6** *nýtovací závitová vložka* FROM VIN JA918810 [NN106021](#) -> [NN106022](#)  
**Poz.16 - Clip-Pipe** FROM VIN JA918810 [NRC6302](#) -> [QGM500110](#)  
**Poz.17 - Plate** FROM VIN JA918810 [NRC8405](#)  
**Poz.18 - Screw-flanged head, M6 X 16MM** FROM VIN JA918810 [FS106167L](#)  
**Poz.19 - Nut-flange, M6** FROM VIN JA918810 [FN106047L](#)  
**Poz.20 - O-Ring, PAS box to return hose,6MM** FROM VIN JA918810 [RTC4825](#)  
**Poz.21 - O Ring**  
 2.5L 5 Cyl L/R Turbo Diesel,LHD,Td5 FROM VIN XA159807 [QYX100280](#)  
 4.0L V8 EFI Petrol,50 LE,LHD FROM VIN JA918810 [QYX100280](#)  
 TDI FROM VIN JA918810 [QYX100280](#)  
**Poz.22 - Clip-swivel, 2.5L 5 Cyl Turbo Diesel,Td5** FROM VIN XA159807 [QYC100290](#)



QEH102390



ANR2485

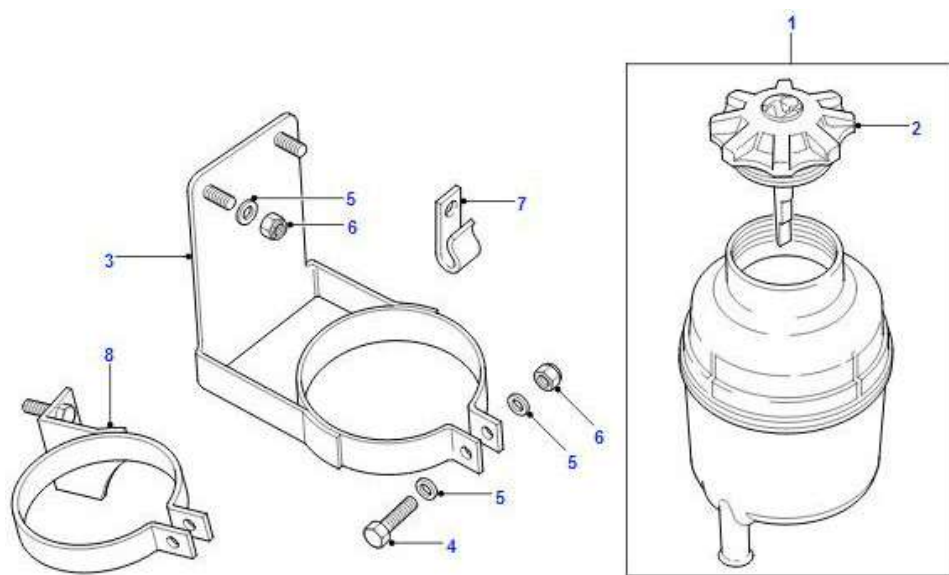


ANR6656

# ŘÍZENÍ – NÁDOBKKA KAPALINY POSILOVAČE

Genuine Power Steering Reservoir-plastic (with Power Steering) For Land Rover Defender 1987 - 2006

<https://parts.jaguarlandroverclassic.com/parts/index/part/id/L1.L1P.L1P01.L1P01030/brand/land-rover/>



**Poz.1 - Reservoir assembly power assisted steering fluid, nádobka kapaliny posilovače řízení**

TO VIN VA101303 [ANR1998](#) -> [ANR6222](#) -> [QFX000030](#)

FROM VIN VA101304 [ANR6222](#) -> [QFX000030](#)

**Poz.2 - Cap power assisted steering reservoir** TO VIN VA101303 [NTC2723](#)

**Poz.3 - Bracket assembly power assisted steering pump & alternator**

[NTC2749](#) -> [QEU500010](#) -> [QEU500100](#)

**Poz.4 - Screw, Flanged Head,M6 X 25MM** [FS106207L](#) -> [FS106206](#)

**Poz.5 - Washer, M6** [WA106041L](#) -> [WA106042](#)

**Poz.6 - Nut-flange, M6** [FN106047L](#)

**Poz.7 - Clip-Hose** [NRC2383](#)

**Poz.8 - Bracket assembly power assisted steering pump & alternator**

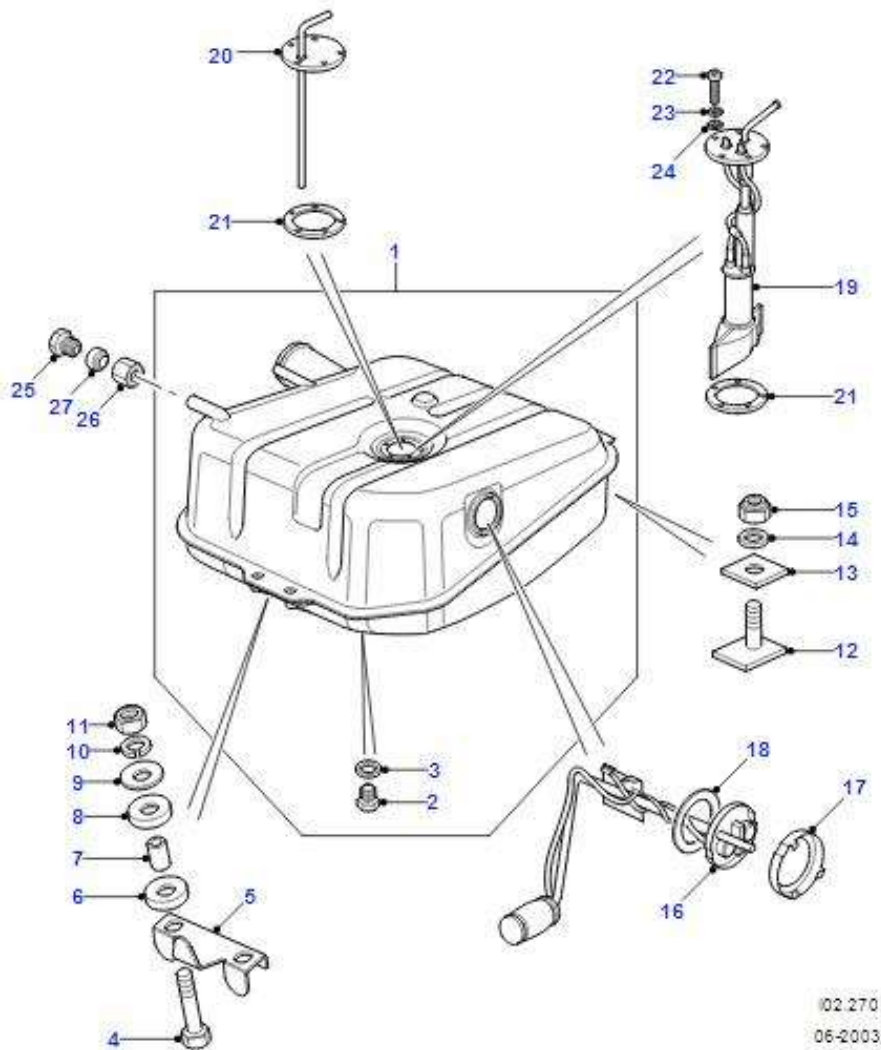
Non Metallic Coating TO VIN 2A635555 [ANR3327](#) -> [QEU500010](#) -> [QEU500100](#)

Zinc Plated FROM VIN 2A635556 [QEU500010](#) -> [QEU500100](#)

# PALIVOVÁ SOUSTAVA – NÁDRŽ 110 a 130

Genuine Fuel Tank Pump And Mountings (110"" ,130"" Wheelbase) ((v)to Wa159806)

For Land Rover Defender 1987 - 2006



## Poz.1 - Tank assembly fuel

90 6 Cylinder,18 gallons,less evaporator loss TO VIN WA159806 [NTC2017](#)

110 **300TDi** [WFE000190](#)

Defender 110 (1983 - 1986) [NRC7570](#)

Poz.2 - Bolt-drain plug fuel tank, 90 6 Cylinder *vypouštěcí zátk*a TO VIN WA159806 [NRC62](#)

Poz.3 - Washer-sealing, 90, **110** 6 Cylinder TO VIN WA159806 [243958](#)

Poz.4 - Bolt M10x45 , 90, **110** TO VIN WA159806 [BH110091L](#)

Poz.5 - Washer assembly, 90, **110** TO VIN WA159806 [NRC6097](#)

Poz.6 - Mounting-rubber, 90, **110** *silentblok uložení nádrže* TO VIN WA159806 [500447](#)

Poz.7 - Spacer Tube Mounting Fuel Tank 110 TO VIN WA159806 [NRC4757](#)

Poz.8 - Mounting-rubber, 90, **110** *silentblok uložení nádrže* TO VIN WA159806 [500447](#)

Poz.9 - Washer TO VIN WA159806 [850641](#)

Poz.10 - Washer M10, *podložka pérová* TO VIN WA159806 [WL110001L](#)

Poz.11 - Nut – Hex, M10,Flanged Head TO VIN WA159806 [FN110041](#)

Poz.12 - Bolt M8 – 90, **110** TO VIN WA159806 [NTC2681](#)

Poz.13 - Spacer – 90, **110** TO VIN WA159806 [NTC2837](#)

Poz.14 - Washer M8,Standard - TO VIN WA159806 - [WA108051](#)-> [WA108051L](#) -> [WA108056](#)

Poz.15 - Nut - Hex. M8,nyloc – 90 - TO VIN WA159806 - [NY108041L](#) -> [NY108041](#) -> [FY108046](#)

## Poz.16 - Sensor unit fuel tank

90, **110**, **130** With Diesel Engines [FROM VIN JA915358 - TO VIN WA159806](#) [AMR1495](#)

TO VIN JA915357 [PRC8463](#)

6 Cylinder , 90,With Petrol Engines FROM VIN JA915412 - TO VIN WA159806 [AMR1496](#)

6 Cylinder,without low fuel warning light 90,With Petrol Engines TO VIN JA915411 [PRC8707](#)

6 Cylinder,with low fuel warning light 90,With Petrol Engines TO VIN JA915411 [STC1482](#)

**Poz.17 - Ring-locking fuel tank**

**4 Cyl Diesel**, 6 Cyl Petrol 90, **110** (1983 - 1998) TO VIN WA159806 [ARA1501L](#)

**Poz.18 - Ring-sealing fuel tank**

90, **110** TO VIN WA159806 [ARA1502L](#)

**Poz.19 - Pump-fuel tank**

6 Cylinder,low pressure, 90,With Petrol Engines TO VIN WA159806 [PRC7020](#)

**Poz.20 - Pipe-fuel feed-fuel tank** *zpětný přívod do nádrže*

90, **110** With Diesel Engines TO VIN WA159806 [NTC2156](#)

**Poz.21 - Seal, 90 + 110** *těsnění příruby zpětného přívodu do nádrže*

TO VIN LA939975 [PRC5852](#) -> [ESR3278](#) -> [WGQ000020](#)

FROM VIN MA939976 - TO VIN WA159806 [ESR3278](#) -> [WGQ000020](#)

**Poz.22 - Screw Pan Head,M5x12** TO VIN WA159806 [SE105121L](#)

**Poz.23 - Washer M5** retaining TO VIN WA159806 [WL105001L](#)

**Poz.24 - Washer M5**,Plain,Standard TO VIN WA159806 [WA105001L](#)

**Poz.25 - Plug M12** (90, **110** With Diesel Engines) TO VIN WA159806 [NTC1612](#)

**Poz.26 - Nut-tube-female M12** (90, **110** With Diesel Engines) TO VIN WA159806 [NRC9770](#)

**Poz.27 - Olive** (90, **110** With Diesel Engines) TO VIN WA159806 [NRC9771](#)

**Poz.(900) - Cradle-fuel tank** TO VIN WA159806 [ESR2204](#)



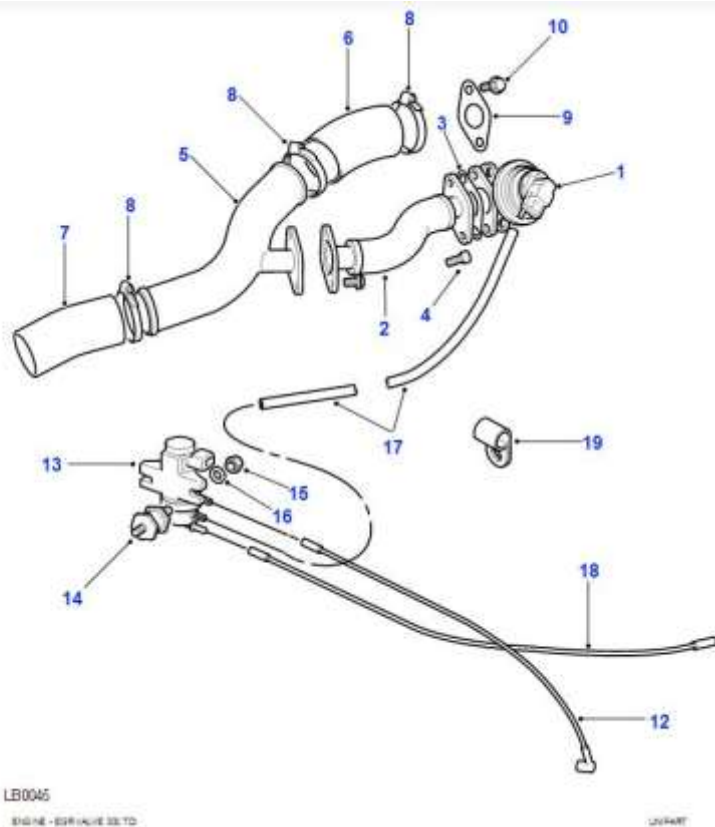
500447



NTC2681

# EMISNÍ SYSTÉM - EGR 300TDi

Exhaust Gas Recirculation Parts, Valve And Pipes (2.5l 4 Cyl Tdi) For Land Rover Defender 1987 - 2006



## Poz.1 - Valve-exhaust gas recirculation engine exhaust

2.5L 4 Cyl TDi L/R, With Exhaust Gas Recirculation

TO 25L08852A - [ERR4047](#) -> [WAV100330](#)

FROM 25L08853A - [WAV100330](#)

## Poz.2 - Pipe-exhaust gas recirculation

Engine Code 16L 2.5 TDi GEM III Manual - 300 Series

2.5L I4 300 TDi Diesel Turbo LR, 5 Speed Manual Transmission, Less Catalyst

TO 21L46223A [ERR3583](#) -> [ERR5731](#)

2.5L I4 300 TDi Diesel Turbo LR, 5 Speed Manual Transmission, 90" Wheelbase, Less Catalyst

FROM 21L46224A [ERR5731](#)

110, With Exhaust Gas Recirculation

FROM 21L46224A [ERR5732](#)

## Poz.3 Gasket-exhaust gas recirculation valve to pipe

Engine Code 16L 2.5 TDi GEM III Manual - 300 Series

2.5L I4 300 TDi Diesel Turbo LR, 5 Speed Manual Transmission, Less Catalyst

[ERR3319](#)

## Poz.5 Pipe-exhaust gas recirculation

15 G, Engine Code 16L 2.5 TDi GEM III Manual - 300 Series

2.5L I4 300 TDi Diesel Turbo LR, 5 Speed Manual Transmission, Less Catalyst

[ERR3579](#)

## Poz.6 Pipe-exhaust gas recirculation

Engine Code 16L 2.5 TDi GEM III Manual - 300 Series

2.5L I4 300 TDi Diesel Turbo LR, 5 Speed Manual Transmission, Less Catalyst

[ERR3580](#)

Poz.7 Pipe-exhaust gas recirculation

Engine Code 16L 2.5 TDi GEM III Manual - 300 Series

2.5L I4 300 TDi Diesel Turbo LR,5 Speed Manual Transmission,Less Catalyst

[ERR3581](#), [PNH000061](#)

Poz.12 Hose-modulator valve to air cleaner

Green,White 90,4 Cylinder TDi L/R FROM VIN LA081991 [ERR4862](#)

Green,Engine Code 16L 2.5 TDi GEM III Manual - 300 Series

2.5L I4 300 TDi Diesel Turbo LR,5 Speed Manual Transmission,90"" Wheelbase,Less Catalyst

[ESR3105](#)

Poz.13 Valve-solenoid-exhaust gas recirculation diesel

Engine Code 16L 2.5 TDi GEM III Manual - 300 Series

2.5L I4 300 TDi Diesel Turbo LR,5 Speed Manual Transmission,Less Catalyst

[ERR3314](#)